



Sears

11255 New Hampshire Ave, Silver Spring, MD 20904

Space

Sears (Two Levels): 268,394 sf
Sears Auto Center: 29,027 sf

Possession

To Be Arranged

Asking Rent

Available Upon Request

Comments

- Rare 7.09 acre parcel
- Ground Floor - 141,816 SF:
 - Slab to Slab ~21'3" (Slab to Drop ~14'11")
- Lower Level - 126,578 SF:
 - Slab to Slab ~16'4" (Slab to Drop ~10'11")
- Auto Center - 29,027 SF
- Great visibility from Columbia Pike (~65,000 VPD) and New Hampshire Ave (~40,000 VPD)
- Best-in-class demographics, with over 411,000 people within 5 miles and average household income in excess of \$95K

Demographics

Distance	'22 Pop	Avg. HHI	Households
1 Mile	18,501	\$73,061	6,834
3 Miles	132,551	\$89,818	46,574
5 Miles	411,014	\$88,943	144,313
10 Miles	1,498,802	\$94,427	584,944

Co-Tenants



Andy Corno

+1 202 719 6137

andy.corno@jll.com

Thomas Jackman

+1 202 719 5624

thomas.jackman@jll.com

Arris Noble

+1 202 738 0406

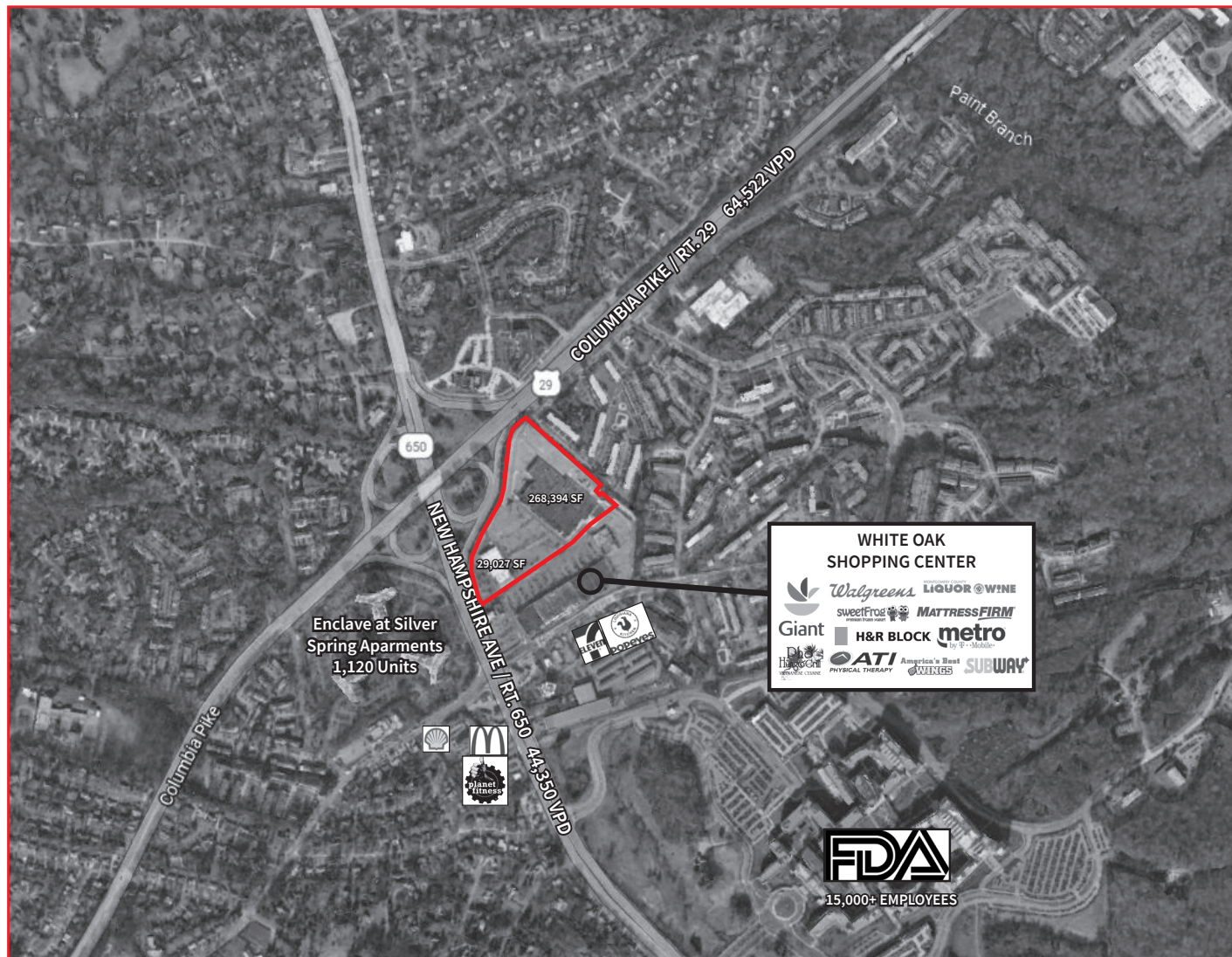
arris.noble@jll.com



Sears

11255 New Hampshire Ave, Silver Spring, MD 20904

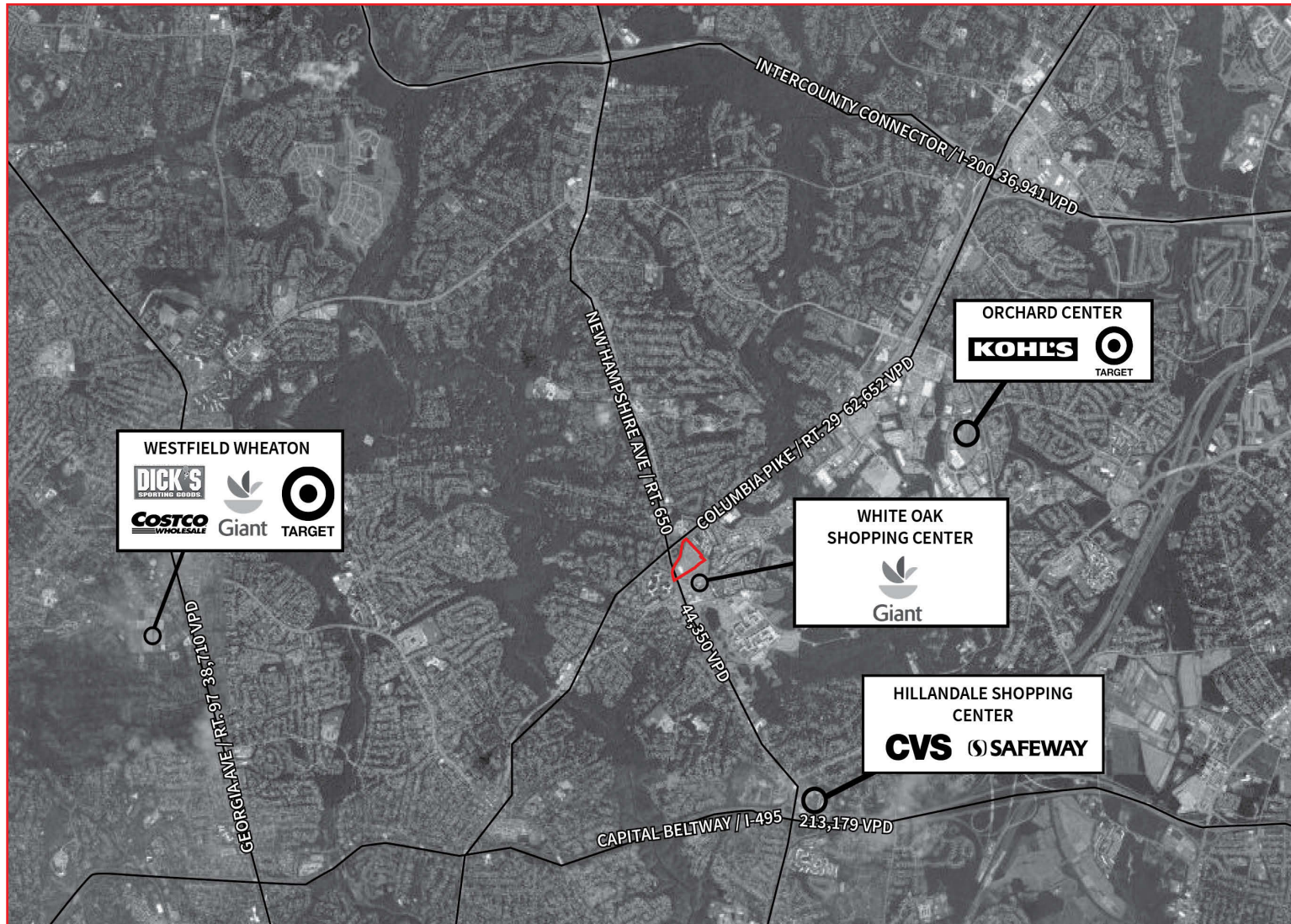
Market Aerial



Sears

11255 New Hampshire Ave, Silver Spring, MD 20904

Area Retailers Map



Sears

11255 New Hampshire Ave, Silver Spring, MD 20904

Site Map



Jones Lang LaSalle Brokerage, Inc. | 2020 K Street NW, Suite 1100, Washington, DC 20006

DISCLAIMER

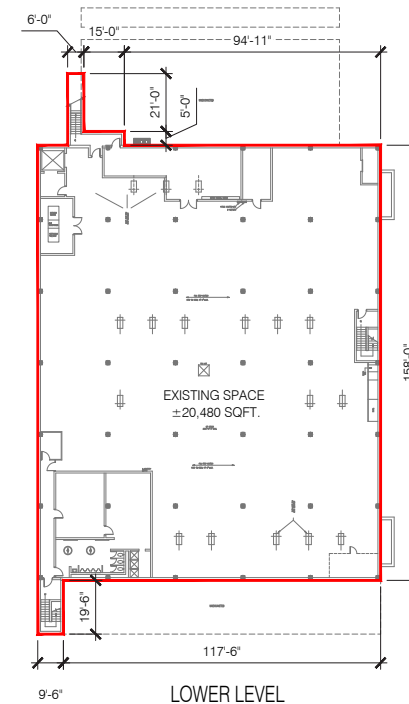
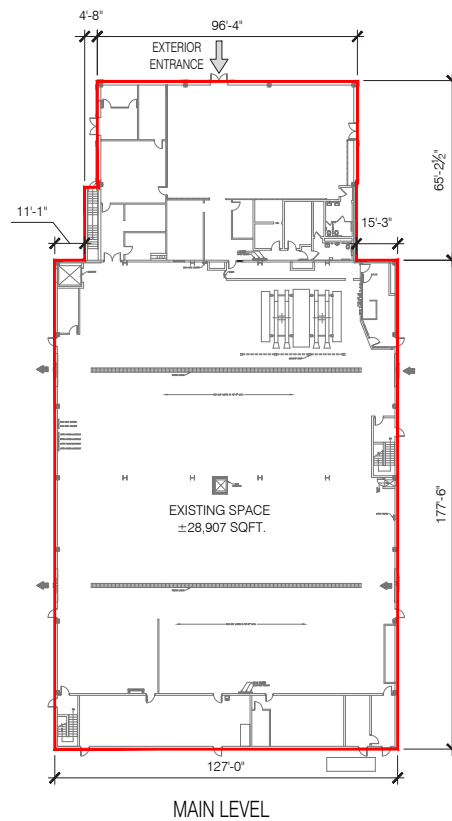
Although information has been obtained from sources deemed reliable, neither Owner nor JLL makes any guarantees, warranties or representations, express or implied, as to the completeness or accuracy as to the information contained herein. Any projections, opinions, assumptions or estimates used are for example only. There may be differences between projected and actual results, and those differences may be material. The Property may be withdrawn without notice. Neither Owner nor JLL accepts any liability for any loss or damage suffered by any party resulting from reliance on this information. If the recipient of this information has signed a confidentiality agreement regarding this matter, this information is subject to the terms of that agreement. ©2020 Jones Lang LaSalle IP, Inc. All rights reserved.



Sears

11255 New Hampshire Ave, Silver Spring, MD 20904

Auto Center



29,027 SF

Jones Lang LaSalle Brokerage, Inc. | 2020 K Street NW, Suite 1100, Washington, DC 20006

DISCLAIMER

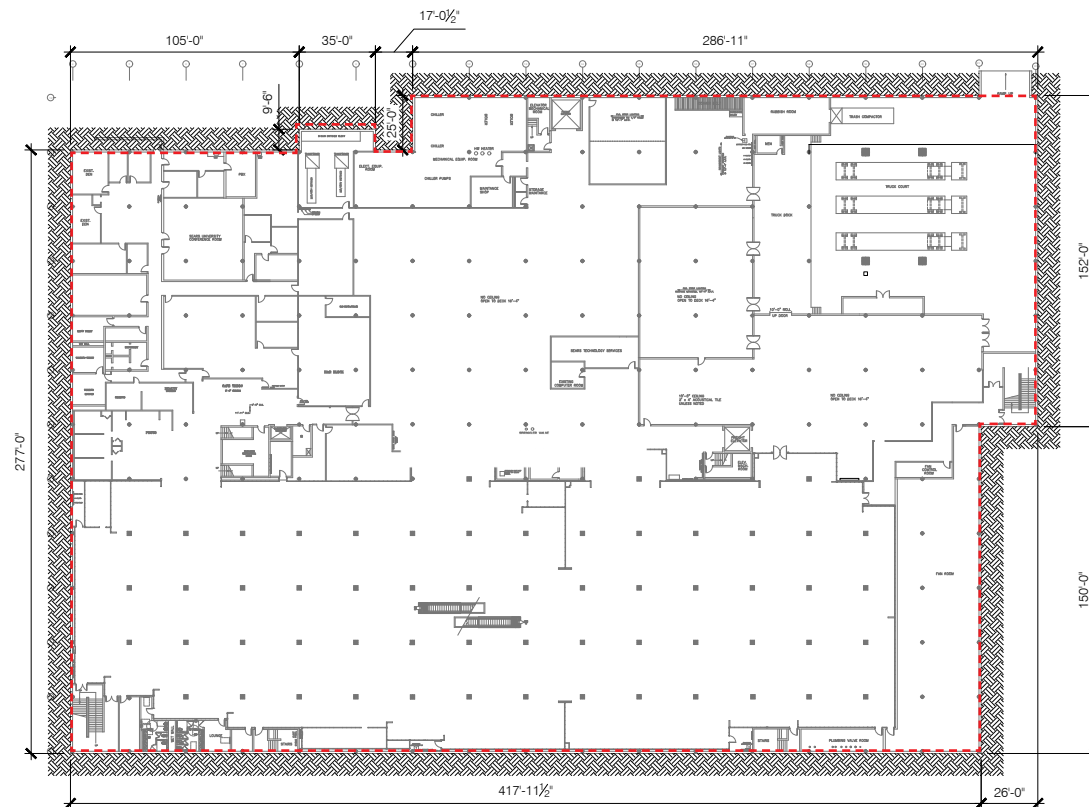
Although information has been obtained from sources deemed reliable, neither Owner nor JLL makes any guarantees, warranties or representations, express or implied, as to the completeness or accuracy as to the information contained herein. Any projections, opinions, assumptions or estimates used are for example only. There may be differences between projected and actual results, and those differences may be material. The Property may be withdrawn without notice. Neither Owner nor JLL accepts any liability for any loss or damage suffered by any party resulting from reliance on this information. If the recipient of this information has signed a confidentiality agreement regarding this matter, this information is subject to the terms of that agreement. ©2020 Jones Lang LaSalle IP, Inc. All rights reserved.



Sears

11255 New Hampshire Ave, Silver Spring, MD 20904

Lower Level



126,578 SF
Ceiling Height - 10"

Jones Lang LaSalle Brokerage, Inc. | 2020 K Street NW, Suite 1100, Washington, DC 20006

DISCLAIMER

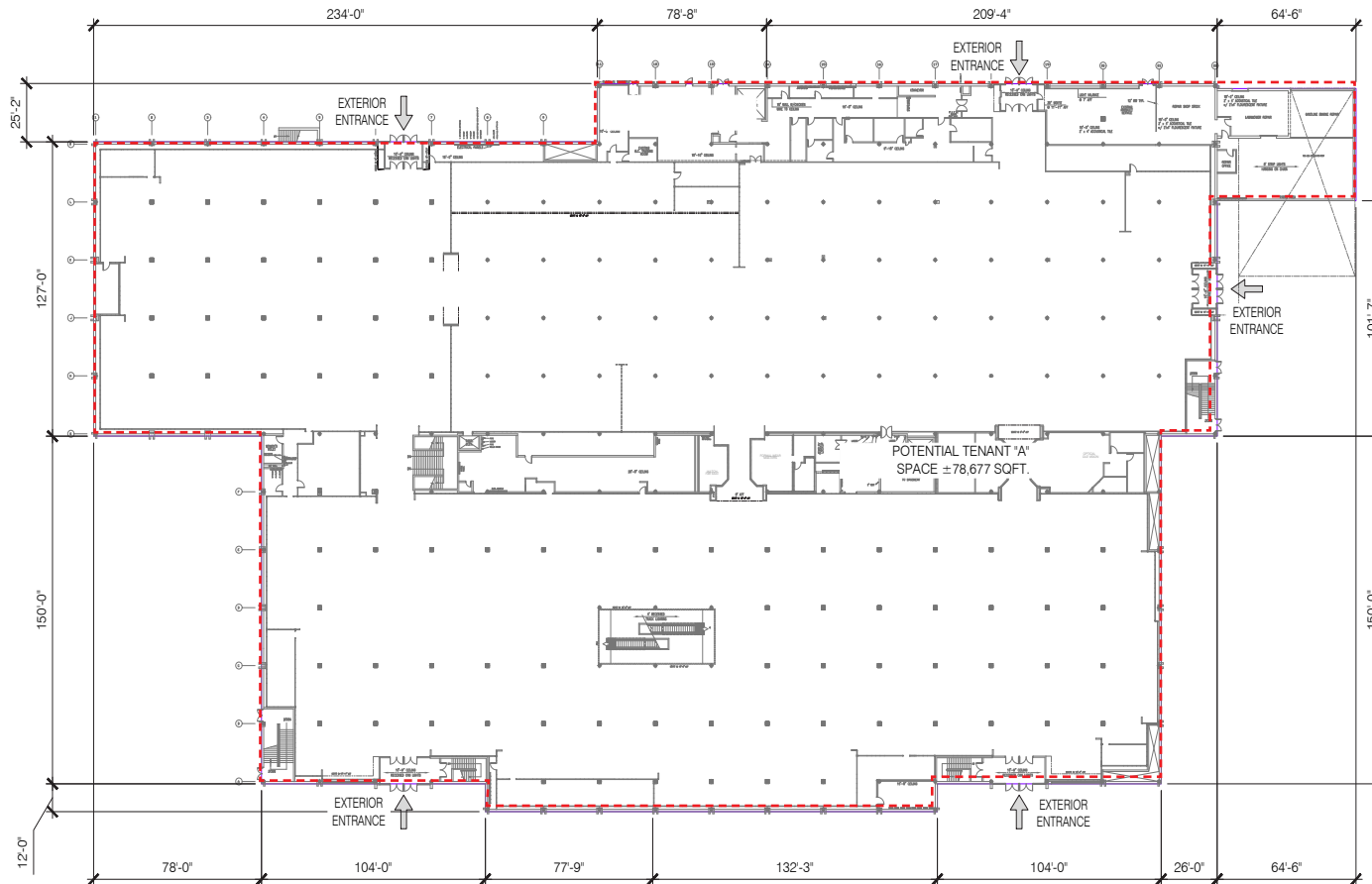
Although information has been obtained from sources deemed reliable, neither Owner nor JLL makes any guarantees, warranties or representations, express or implied, as to the completeness or accuracy as to the information contained herein. Any projections, opinions, assumptions or estimates used are for example only. There may be differences between projected and actual results, and those differences may be material. The Property may be withdrawn without notice. Neither Owner nor JLL accepts any liability for any loss or damage suffered by any party resulting from reliance on this information. If the recipient of this information has signed a confidentiality agreement regarding this matter, this information is subject to the terms of that agreement. ©2020 Jones Lang LaSalle IP, Inc. All rights reserved.



Sears

11255 New Hampshire Ave, Silver Spring, MD 20904

Main Level



141,816 SF
Ceiling Height - 14"

Jones Lang LaSalle Brokerage, Inc. | 2020 K Street NW, Suite 1100, Washington, DC 20006

DISCLAIMER

Although information has been obtained from sources deemed reliable, neither Owner nor JLL makes any guarantees, warranties or representations, express or implied, as to the completeness or accuracy as to the information contained herein. Any projections, opinions, assumptions or estimates used are for example only. There may be differences between projected and actual results, and those differences may be material. The Property may be withdrawn without notice. Neither Owner nor JLL accepts any liability for any loss or damage suffered by any party resulting from reliance on this information. If the recipient of this information has signed a confidentiality agreement regarding this matter, this information is subject to the terms of that agreement. ©2020 Jones Lang LaSalle IP, Inc. All rights reserved.

