

425 UNION STREET BRASS MILL MALL

WATERBURY,
CONNECTICUT



AUTO-CENTER



BEN STARR
617.239.3643
bstarr@atlanticretail.com

ANDREW MURMES
617.369.5909
amurmes@atlanticretail.com

SCOTT BLACK
617.369.5902
sblack@atlanticretail.com

ZACH NITSCHKE
617.316.6460
zach.nitsche@am.jll.com

CHRIS ANGELONE
617.316.6460
chris.angelone@am.jll.com

±157,647 SF BUILDING (2-LEVEL)
±22,450 SF AUTO-CENTER
ANCHOR OPPORTUNITY
PARCEL SIZE: 10.3 ACRES

PROJECT HIGHLIGHTS

- +/- 157,647 SF (2-level) Anchor opportunity at the Brass Mill Mall directly off exit 22 and 23 on I-84 (101,000 ADT)
- Co-anchored by Burlington, JC Penney, and Macy's.
- Ample parking
- Parcel size 10.3 acres.
- Zoned Commercial Arterial
- +/- 22,450 SF auto center

DEMOGRAPHICS



POPULATION

3 MILE 28,423 | 5 MILE 100,348 | 7 MILE 152,748



MED HH INCOME

3 MILE \$77,704 | 5 MILE \$59,244 | 7 MILE \$63,020

NEARBY RETAILERS



Burlington

JCPenney T.J. maxx®

Michaels ★ macy's



BEN STARR

617.239.3643

bstarr@atlanticretail.com

ANDREW MURMES

617.369.5909

amurmes@atlanticretail.com

SCOTT BLACK

617.369.5902

sblack@atlanticretail.com

ZACH NITSCHÉ

617.316.6460

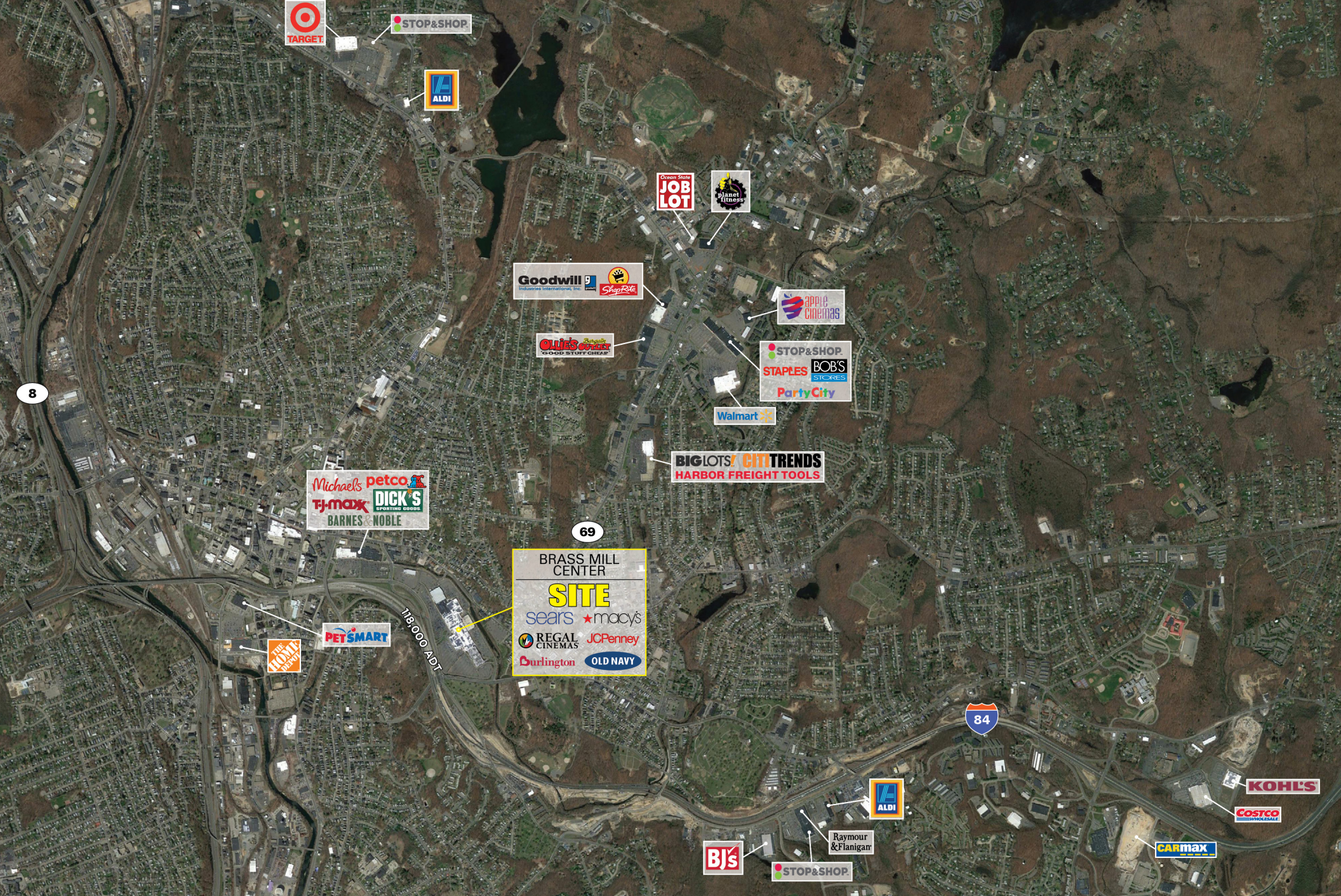
zach.nitsche@am.jll.com

CHRIS ANGELONE

617.316.6460

chris.angelone@am.jll.com

±157,647 SF BUILDING (2-LEVEL)
±22,450 SF AUTO-CENTER
 ANCHOR OPPORTUNITY
 PARCEL SIZE: 10.3 ACRES



BEN STARR
617.239.3643
bstarr@atlanticretail.com

ANDREW MURMES
617.369.5909
amurmes@atlanticretail.com

SCOTT BLACK
617.369.5902
sblack@atlanticretail.com

ZACH NITSCH
617.316.6460
zach.nitsche@am.jll.com

CHRIS ANGELONE
617.316.6460
chris.angelone@am.jll.com

±157,647 SF BUILDING (2-LEVEL)
±22,450 SF AUTO-CENTER
ANCHOR OPPORTUNITY
PARCEL SIZE: 10.3 ACRES