

Sayville Plaza

5151 Sunrise Highway, Sayville, New York

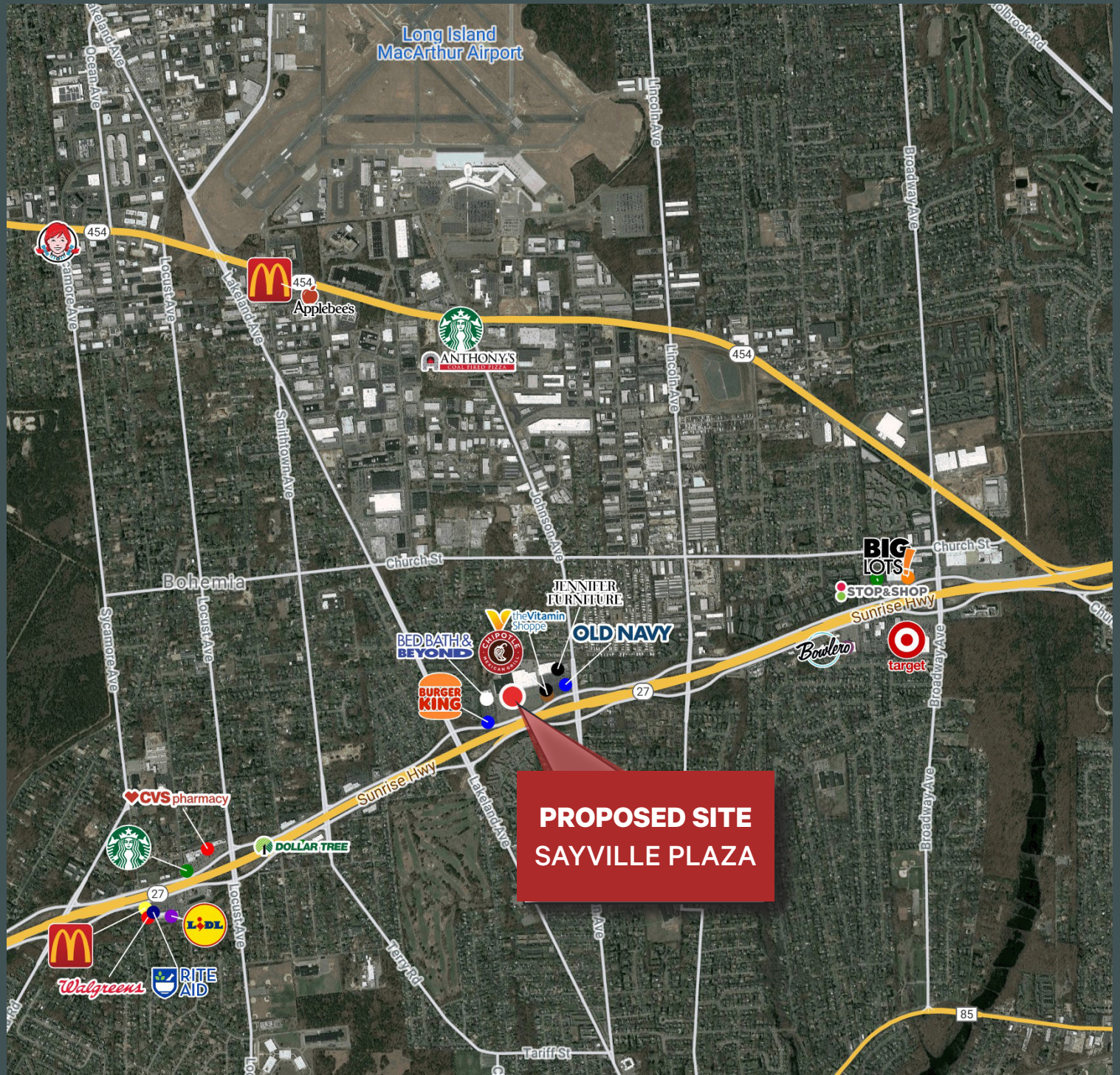


Property Information

- + **Available for Lease:** 8,000 square feet
- + **Zoning:** Business -1
- + **Term:** Subject to negotiation
- + **Possession:** Arranged
- + **Asking Rent:** \$35.00 PSF NNN
- + **Real Estate Taxes:** \$4.92 per SF (2022)
- + **CAM:** \$2.90 PSF
- + Lease through Transformco, represented by CBRE

Comments: Neighboring co-tenants include Floor & Decor, At Home, Aldi, Jo-Ann's Fabric Bed Bath & Beyond, Old Navy, Panera Bread, Chipotle, GoHealth Urgent Care, F45 Training, Sprint, The Vitamin Shoppe, and Coming Soon: Christmas Tree Shops, Harbor Freight, and Boot Barn

Macro Aerial



Contact Us

John Hanlon
Senior Vice President
+1 631 370 6030
john.hanlon@cbre.com

Marta Villa
Senior Vice President
+1 973 437 2040
marta.villa@cbre.com

Site Plan

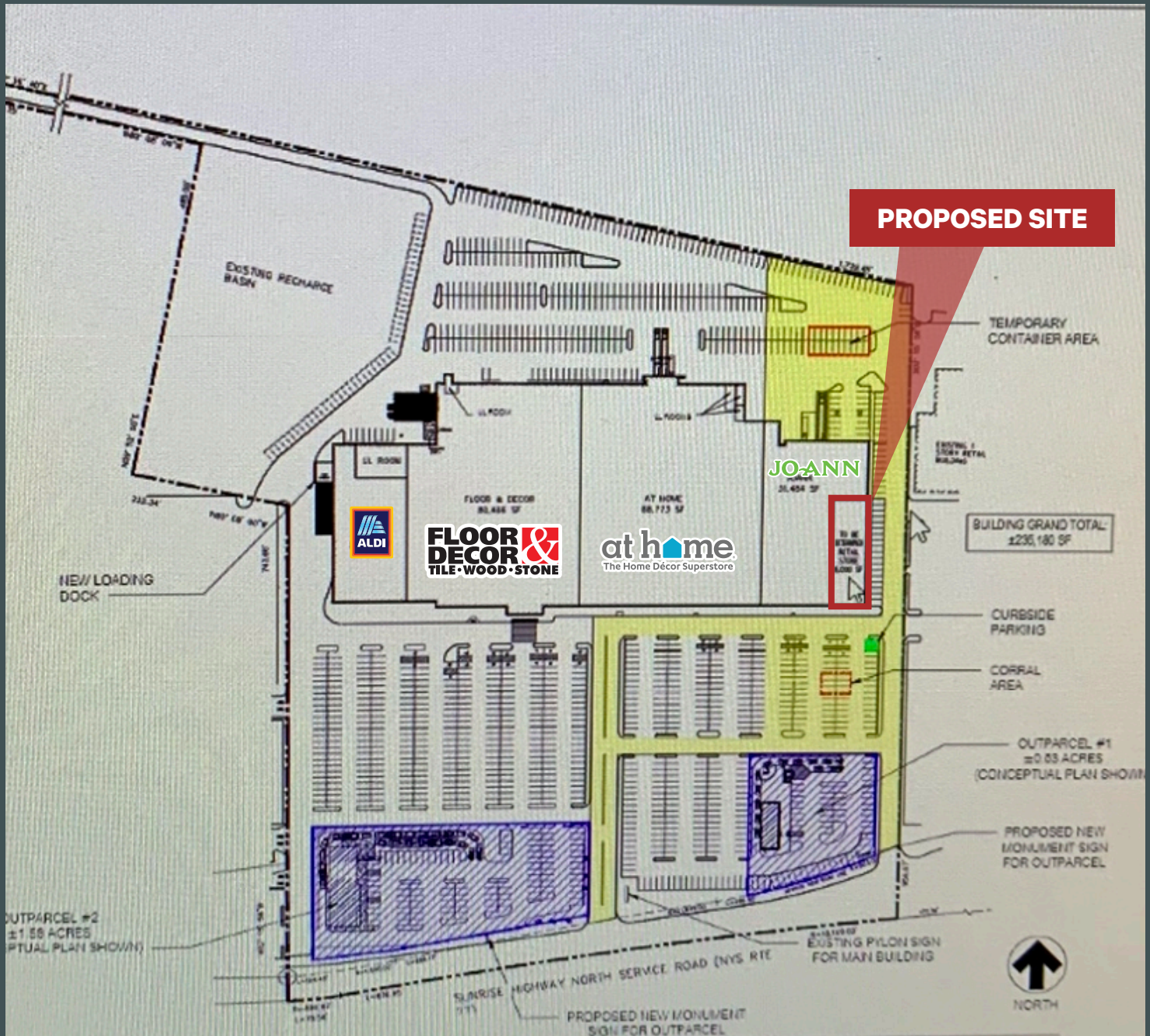


Contact Us

John Hanlon
Senior Vice President
+1 631 370 6030
john.hanlon@cbre.com

Marta Villa
Senior Vice President
+1 973 437 2040
marta.villa@cbre.com

Site Plan

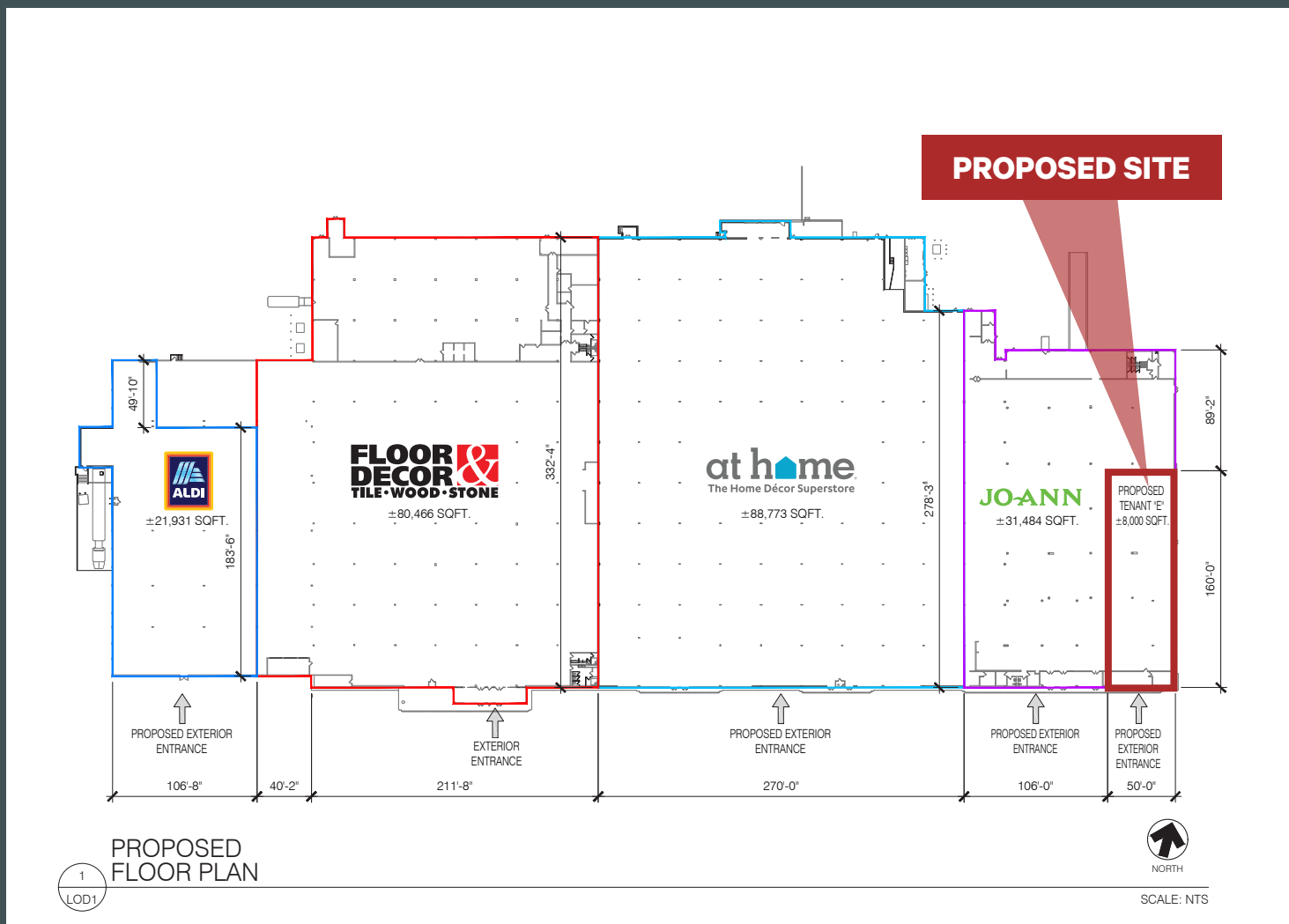


Contact Us

John Hanlon
Senior Vice President
+1 631 370 6030
john.hanlon@cbre.com

Marta Villa
Senior Vice President
+1 973 437 2040
marta.villa@cbre.com

Floor Plan

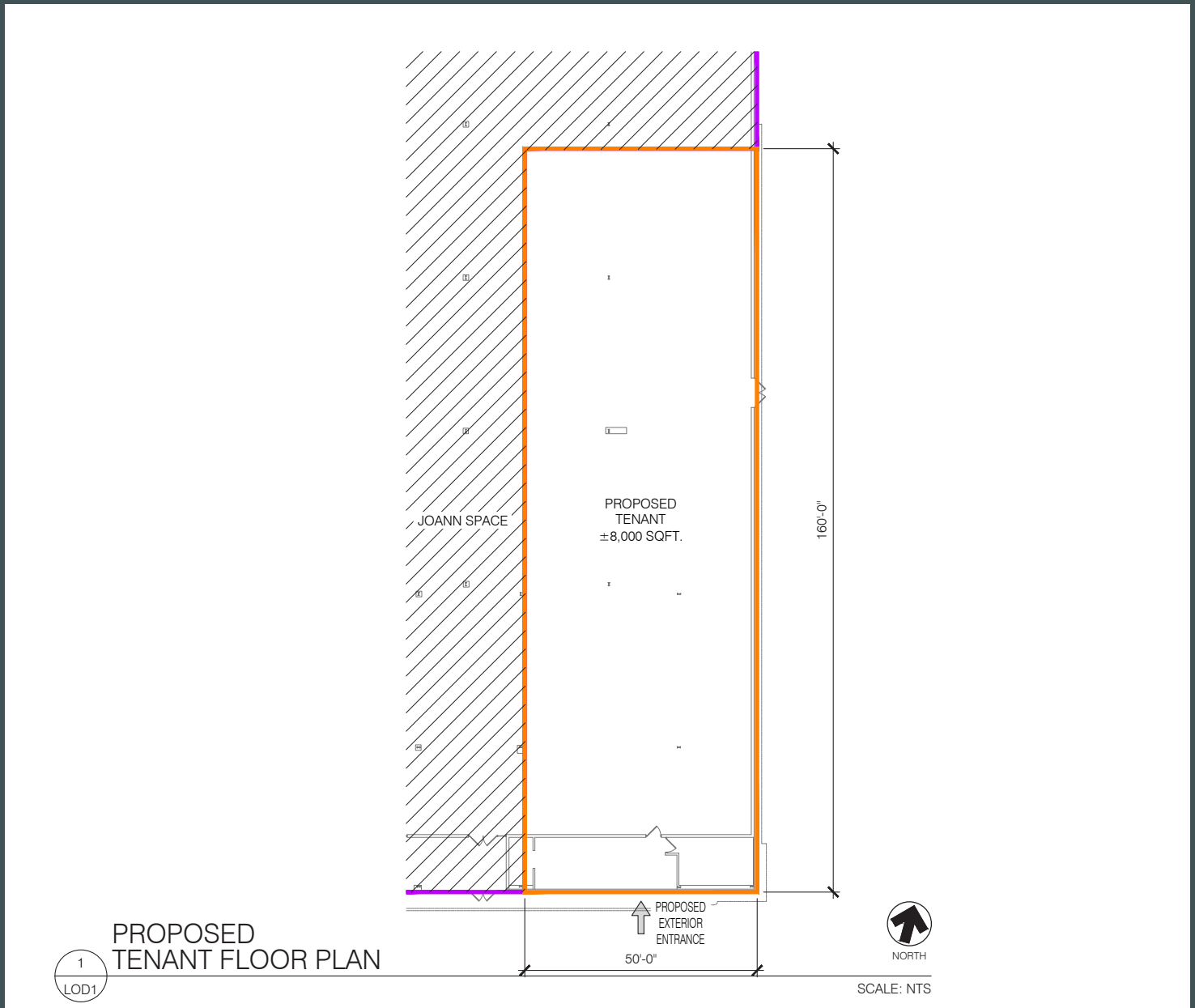


Contact Us

John Hanlon
Senior Vice President
+1 631 370 6030
john.hanlon@cbre.com

Marta Villa
Senior Vice President
+1 973 437 2040
marta.villa@cbre.com

Floor Plan



Contact Us

John Hanlon
Senior Vice President
+1 631 370 6030
john.hanlon@cbre.com

Marta Villa
Senior Vice President
+1 973 437 2040
marta.villa@cbre.com

Site Photos



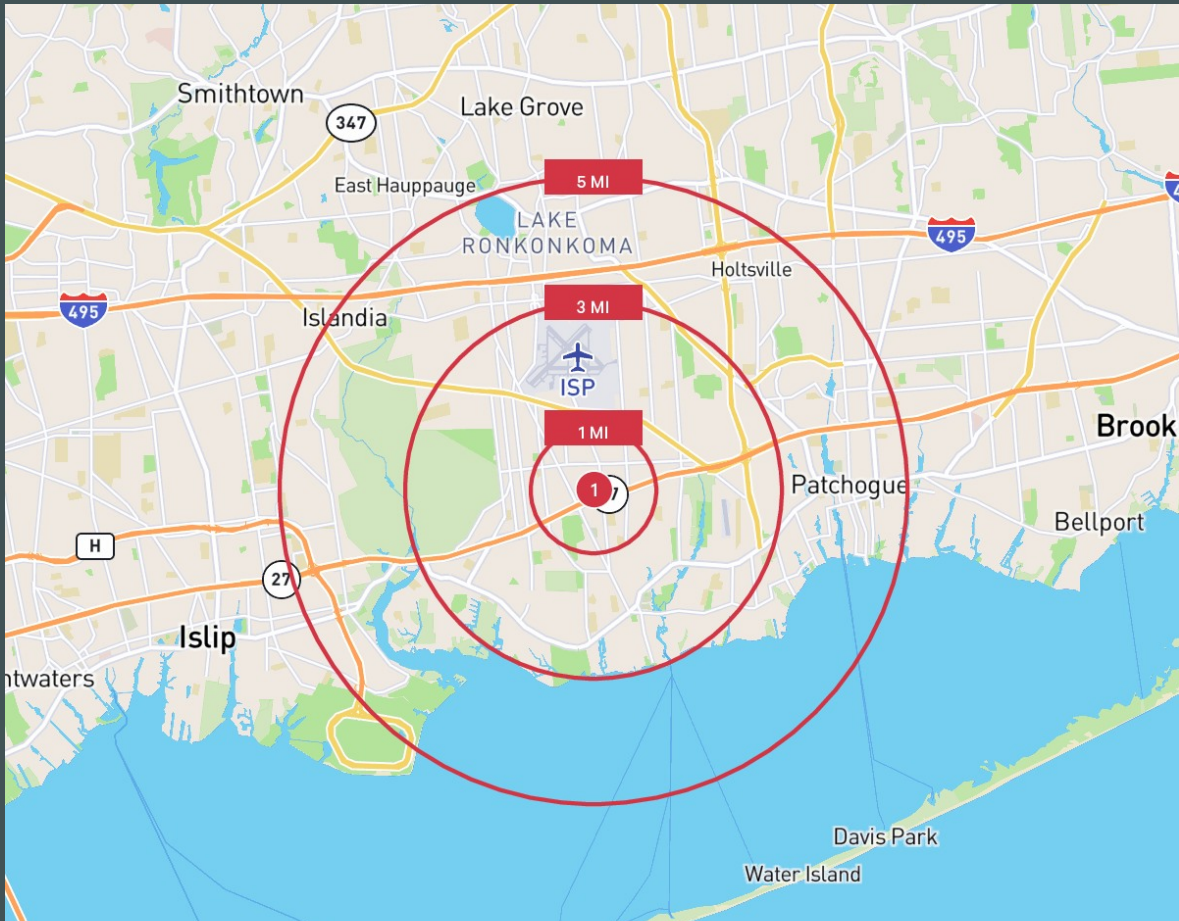
Contact Us

John Hanlon
Senior Vice President
+1 631 370 6030
john.hanlon@cbre.com

Marta Villa
Senior Vice President
+1 973 437 2040
marta.villa@cbre.com

Demographics

| Demographics | 1 Mile | 3 Miles | 5 Miles |
|----------------|-----------|-----------|-----------|
| Population | 9,039 | 64,973 | 168,703 |
| Med. HH Income | \$101,683 | \$116,466 | \$112,287 |
| Daytime Pop. | 11,463 | 77,387 | 165,004 |



Contact Us

John Hanlon
Senior Vice President
+1 631 370 6030
john.hanlon@cbre.com

Marta Villa
Senior Vice President
+1 973 437 2040
marta.villa@cbre.com

© 2023 CBRE, Inc. All rights reserved. This information has been obtained from sources believed reliable, but has not been verified for accuracy or completeness. You should conduct a careful, independent investigation of the property and verify all information. Any reliance on this information is solely at your own risk. CBRE and the CBRE logo are service marks of CBRE, Inc. All other marks displayed on this document are the property of their respective owners, and the use of such logos does not imply any affiliation with or endorsement of CBRE. Photos herein are the property of their respective owners. Use of these images without the express written consent of the owner is prohibited.