

Colliers

1067 W. Baltimore Pike
Media, PA 19063

Available for Lease!



Mark Anderson
Senior Vice President | Pittsburgh
Retail Brokerage
+1 412 515 8521
marke.anderson@colliers.com

Todd Sussman
Senior Managing Director | Philadelphia
Retail Brokerage
+1 215 928 7575
todd.sussman@colliers.com

Jonathan Levinson
Senior Associate | Pittsburgh
Retail Brokerage
+1 412 515 8545
jonathan.levinson@colliers.com



Property Features:

- **181,351 SF**
 - 1st Floor: **90,266 SF**
 - 2nd Floor: **91,085 SF**
- **+/- 28,000 SF former Sears Auto**
- I-83 annual average daily traffic **over 89,000**
- Jonestown Road annual average daily traffic **over 30,000**
- **Ceiling Heights:**
 - 21'6" to the deck and 19'8" to the joist
 - 17'5" and 15'8" for the lower level
- Nearby tenants include **At Home, Boscov's, The Edge Fitness, and Acme**

7-Mile Radius Demographics



Number of Households

105,253



Avg. HH Income

\$93,224



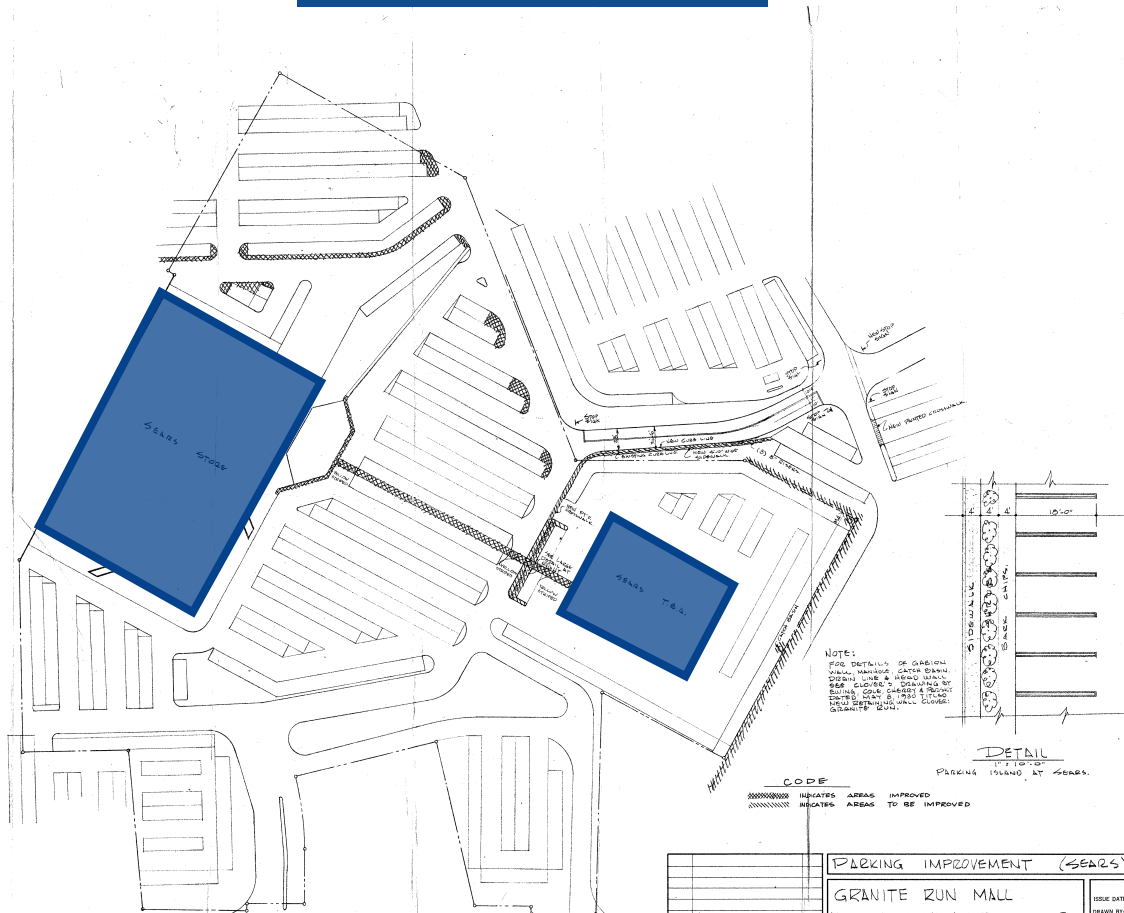
Population

252,092

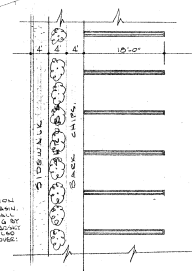
Property Photos



Site Plan



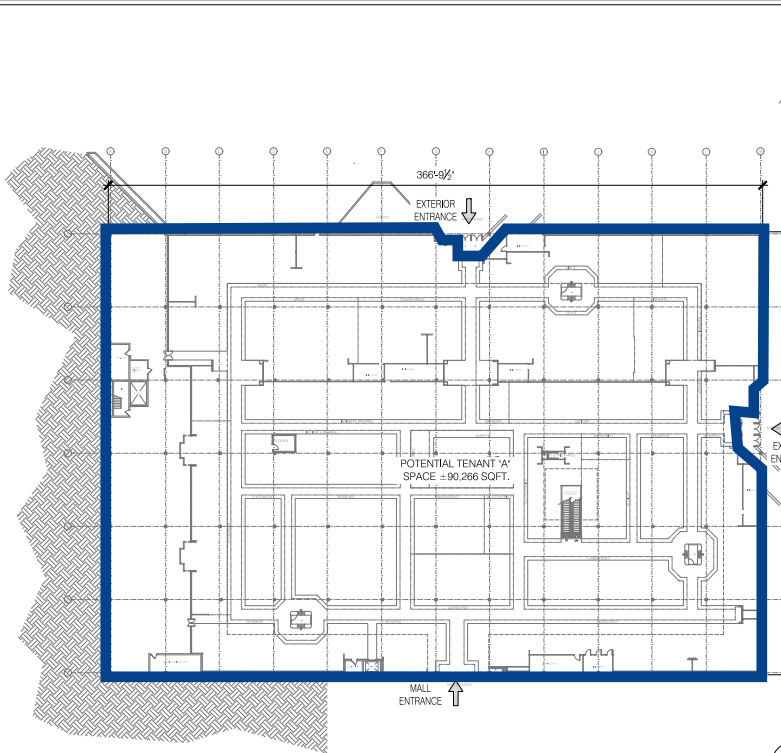
NOTE:
 FOR DETAILS OF GARBAGE
 WALL, HANDLE DATA BANK,
 CURB, CURB & ROAD WALL,
 SEE GARBAGE'S, SIGNAGE BY
 BUILDING CODE DEPT. 4 & 5
 THIS DRAWING IS FROM LATEST
 TRAC DRAWING WALL COVER
 GRANITE RUN.



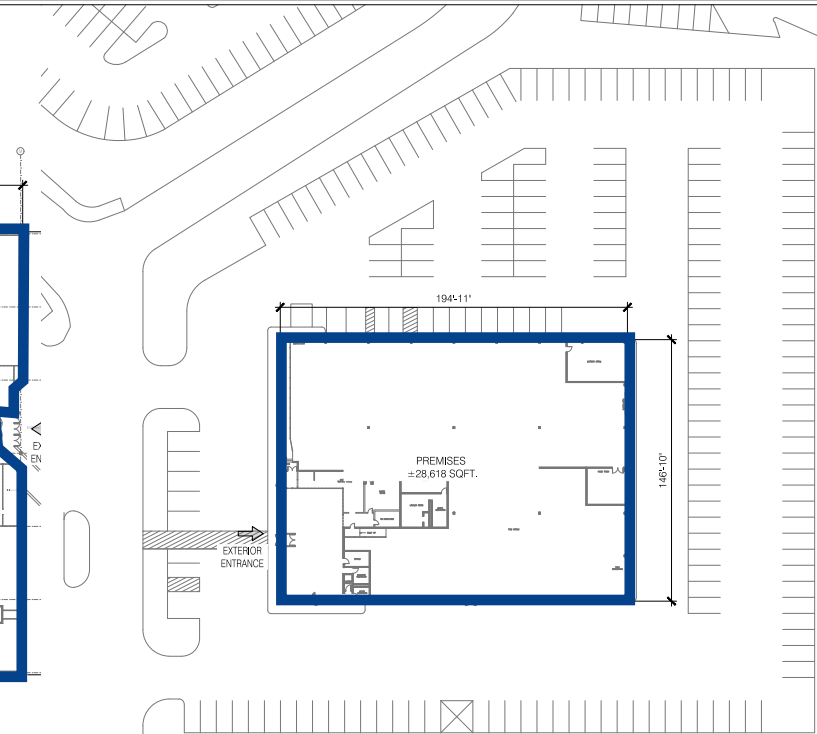
CODE
 ===== INDICATES AREAS IMPROVED
 ===== INDICATES AREAS TO BE IMPROVED

PARKING IMPROVEMENT (SEARS)	
GRANITE RUN MALL	
MIDDLETON TWP., BERKSHIRE CTY., PA.	
GOODMAN DEVELOPMENT COMPANY A DIVISION OF THE GOODMAN COMPANY 2030 BUILDING ST. P.O. BOX 32527 2030 FLEMING ST. ALLENTOWN, PA. 18001	
ISSUE DATE: 5-20-80 DRAWN BY: gdc CHECKED BY: SCALE: NOTED DRAWING NO.: SK-3	

Floor Plans



1
LOD1
PROPOSED
LEVEL 1 PLAN



PROPOSED
LEVEL 1 PLAN
SCALE



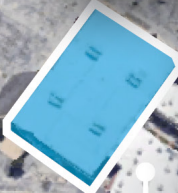
NORTH

SCALE: NTS

Retail Map



38,800 ADT



24,961 ADT



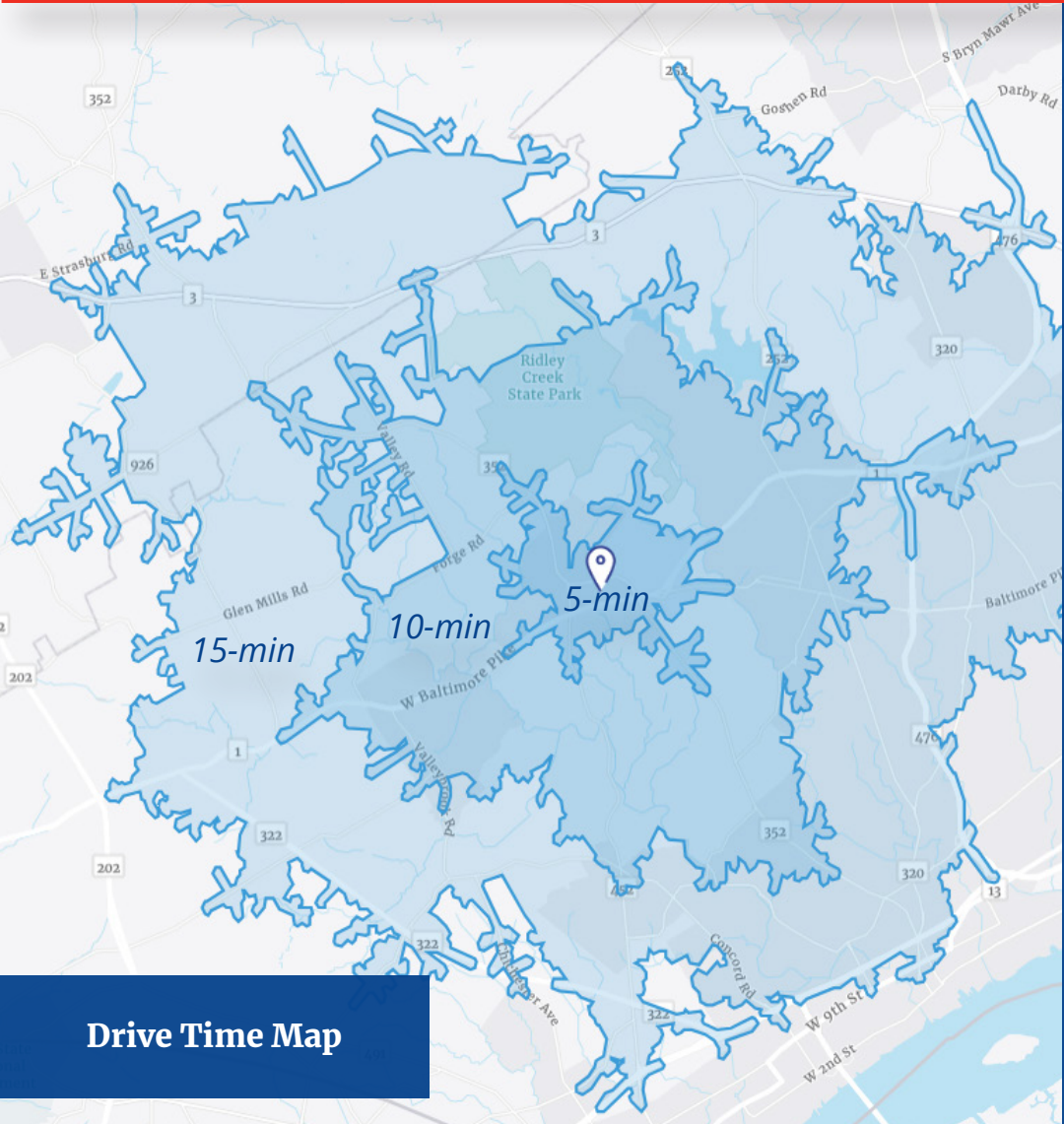
Media, PA

Media, PA, known as “Everybody’s Hometown,” combines small-town charm with a dynamic retail landscape. Its walkable State Street is a retail aficionado’s delight, boasting an array of boutique shops, art galleries, and eateries that cater to every palate. As the county seat of Delaware County, Media is not just a cultural hub but also a prime retail node, offering a vibrant mix of shopping and entertainment options within its historic setting, thus attracting a diverse clientele.

Downtown Philadelphia
35-minute drive

King of Prussia Mall
30-minute drive

Temple University
35-minute drive



Drive Time Map

Property Information

1067 W. Baltimore Pike

The property is a 181,351 SF two story retail building attached to the Promenade at Granite Run and +/- 28,000 SF former Sears Auto in Media PA, approximately 28 min (21.4 mile) drive to downtown Philadelphia. This contemporary development, unveiled in 2018, blends residential, retail, and entertainment spaces, marking a significant transformation from its predecessor.

Address	1067 W. Baltimore Pike
City, State	Media, PA
County	Delaware
Co-Tenants	Boscov's, TJ Maxx, Michaels
Building SF	181,351 SF
# of Stories	2
Year Built	1974

Tax Parcel #	27-00-00041-00
Zoning	C3 - Planned Commercial
Intended Use	Retail
Opportunity Zone	No
Acres	16.61 AC
Premises Type	Open Air Center
Type of Construction	Masonry

Contact Us:



Mark Anderson
Senior Vice President | Pittsburgh
Retail Brokerage
+1 412 515 8521
marke.anderson@colliers.com



Jonathan Levinson
Senior Associate | Pittsburgh
Retail Brokerage
+1 412 515 8545
jonathan.levinson@colliers.com



Todd Sussman
Senior Managing Director | Northeast Regional Leader
Retail Brokerage
+1 215 928 7575
todd.sussman@colliers.com

This analysis has not been performed in accordance with the Uniform Standards of Professional Appraisal Practice which require valuers to act as unbiased, disinterested third parties with impartiality, objectivity and independence and without accommodation of personal interest.