

Former Kmart

104,519 SF Available

Property Information

- + Positioned on the main retail hub west of Wilkes Barre
- + Densely populated serving over 91,000 people in 3 miles
- + Conveniently located just off of Route 309

Surrounding Retailers Include:



18 Mark Plaza
Edwardsville, PA 18704

216,401 SF Available in Center



Contact Us

Jeffrey Cohen
Executive Vice President
484 567 2368
jeffrey.cohen@cbre.com
Licensed: DE, PA
Licensed Salesperson: NJ

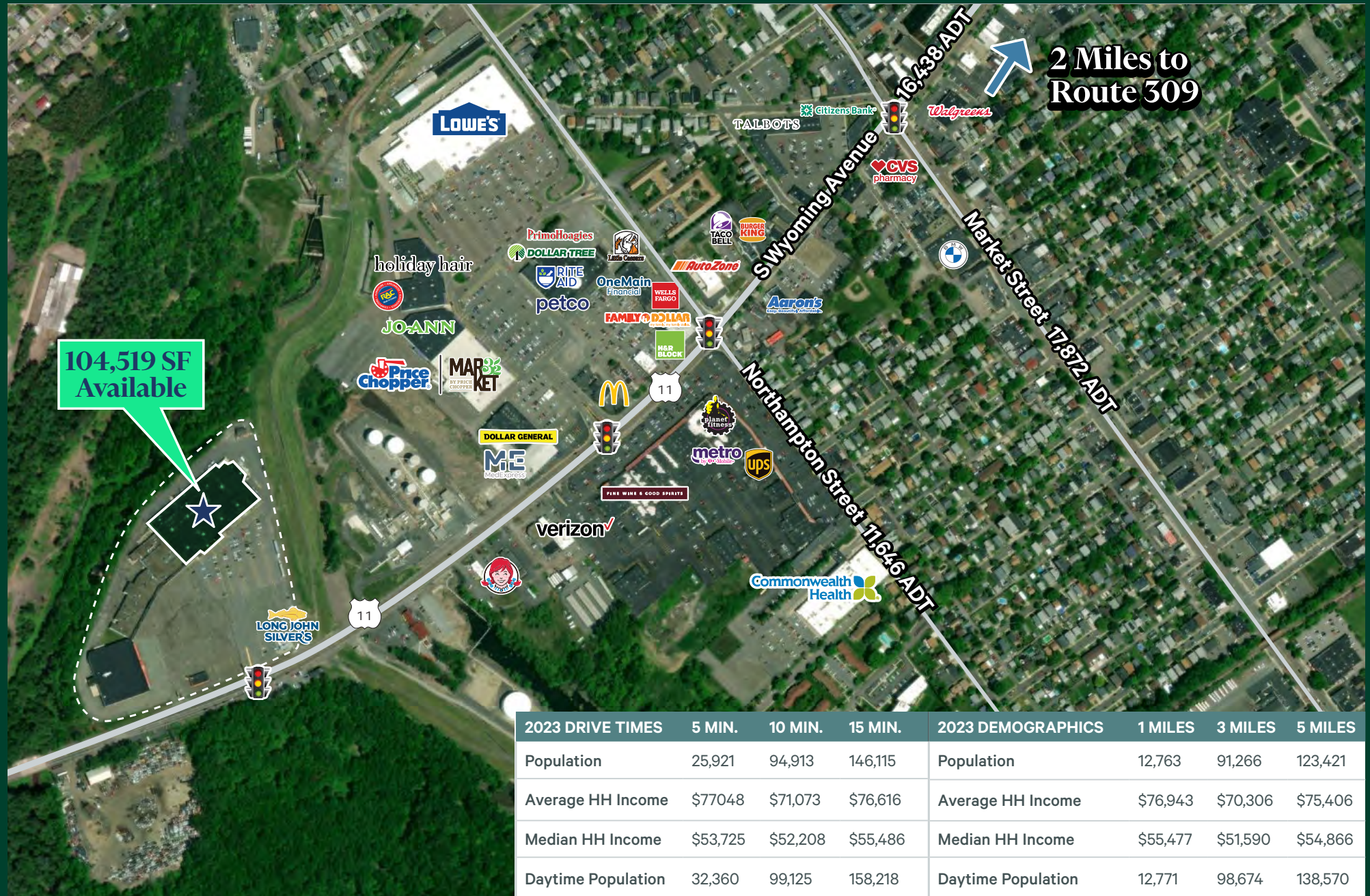
Nelson Wax
Senior Associate
484 567 3347
nelson.wax@cbre.com
Licensed: DE, PA
Licensed Salesperson: NJ

CBRE, Inc.
T 610 834 8000
F 610 834 1793
Licensed Real Estate Broker
www.cbre.us/PhiladelphiaRetail

104,519 SF Available

18 Mark Plaza | Edwardsville, PA 18704

For Lease

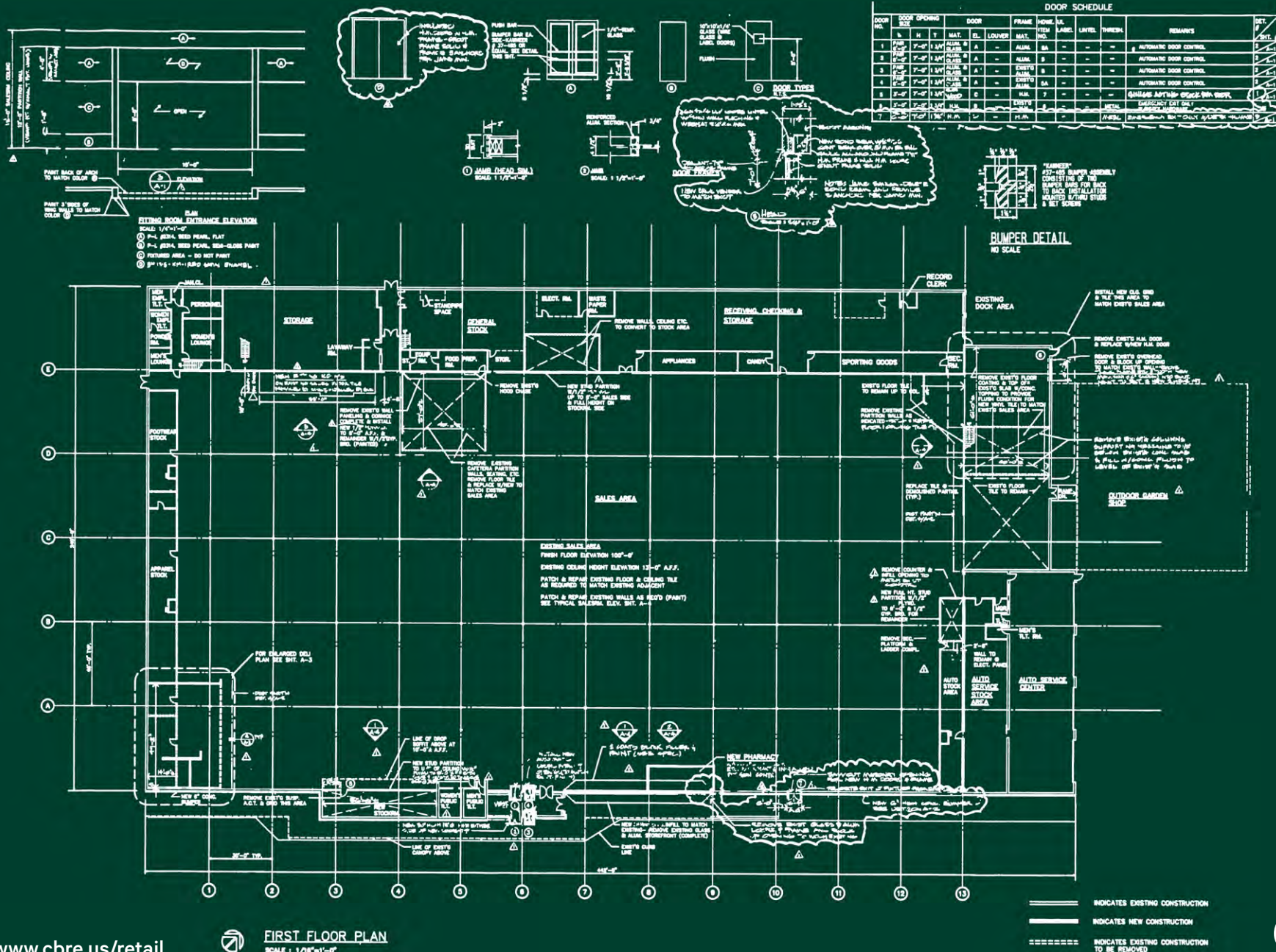


104,519 SF Available

2 Miles to Route 309

2023 DRIVE TIMES	5 MIN.	10 MIN.	15 MIN.	2023 DEMOGRAPHICS	1 MILES	3 MILES	5 MILES
Population	25,921	94,913	146,115	Population	12,763	91,266	123,421
Average HH Income	\$77048	\$71,073	\$76,616	Average HH Income	\$76,943	\$70,306	\$75,406
Median HH Income	\$53,725	\$52,208	\$55,486	Median HH Income	\$55,477	\$51,590	\$54,866
Daytime Population	32,360	99,125	158,218	Daytime Population	12,771	98,674	138,570

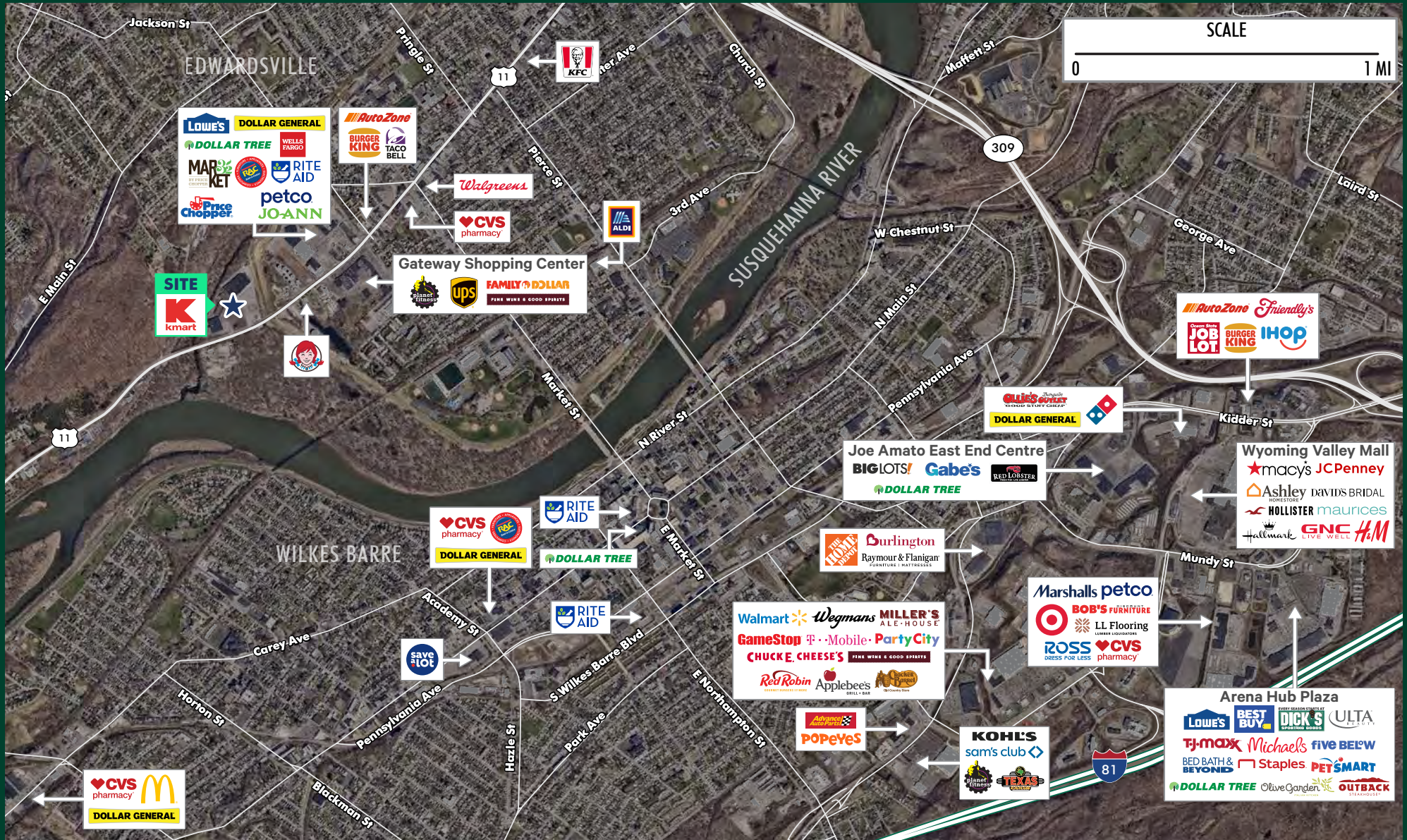
Space Plan



104,519 SF Available

18 Mark Plaza | Edwardsville, PA 18704

For Lease



© 2023 CBRE, Inc. All rights reserved. This information has been obtained from sources believed reliable, but has not been verified for accuracy or completeness. You should conduct a careful, independent investigation of the property and verify all information. Any reliance on this information is solely at your own risk. CBRE and the CBRE logo are service marks of CBRE, Inc. All other marks displayed on this document are the property of their respective owners, and the use of such logos does not imply an affiliation with or endorsement of CBRE. Photos herein are the property of their respective owners. Use of these images without the express written consent of the owner is prohibited.

www.cbre.us/retail

