

300 BAYCHESTER AVENUE

BRONX, NY

Bay Plaza

134,028 SF

RETAIL

FOR LEASE

CBRE

BAY PLAZA

300 BAYCHESTER AVENUE

BRONX, NY

134,028 SF

ZONING:

C4-3 permitting specialty & department stores, theaters & other commercial & office uses serve a larger region and generate more traffic than neighborhood shopping areas.

POSSESSION: TERM:

TBD To be negotiated

ASKING RENT: CAM:

Subject to negotiation Tenant to self-maintain

REAL ESTATE TAXES:

\$10.12 PSF (2023/2024 RE Taxes)

COMMENTS:

Party City, Staples, Ashley Furniture, Nike, Panera Bread, Bob's Discount Furniture, Carters, European Wax Center, CityMD, Sephora, The Mall at Bay Plaza (Macy's, JC Penney)

DEMOGRAPHICS:

	½ MILE	1 MILE	3 MILES	5 MILES
POPULATION	17,694	68,400	569,258	1,504,735
AVG. HH INCOME	\$76,253	\$84,048	\$83,563	\$79,942
DAYTIME POPUL.	18,583	59,094	487,436	1,286,873

Trade Area



Bronx Market Aerial



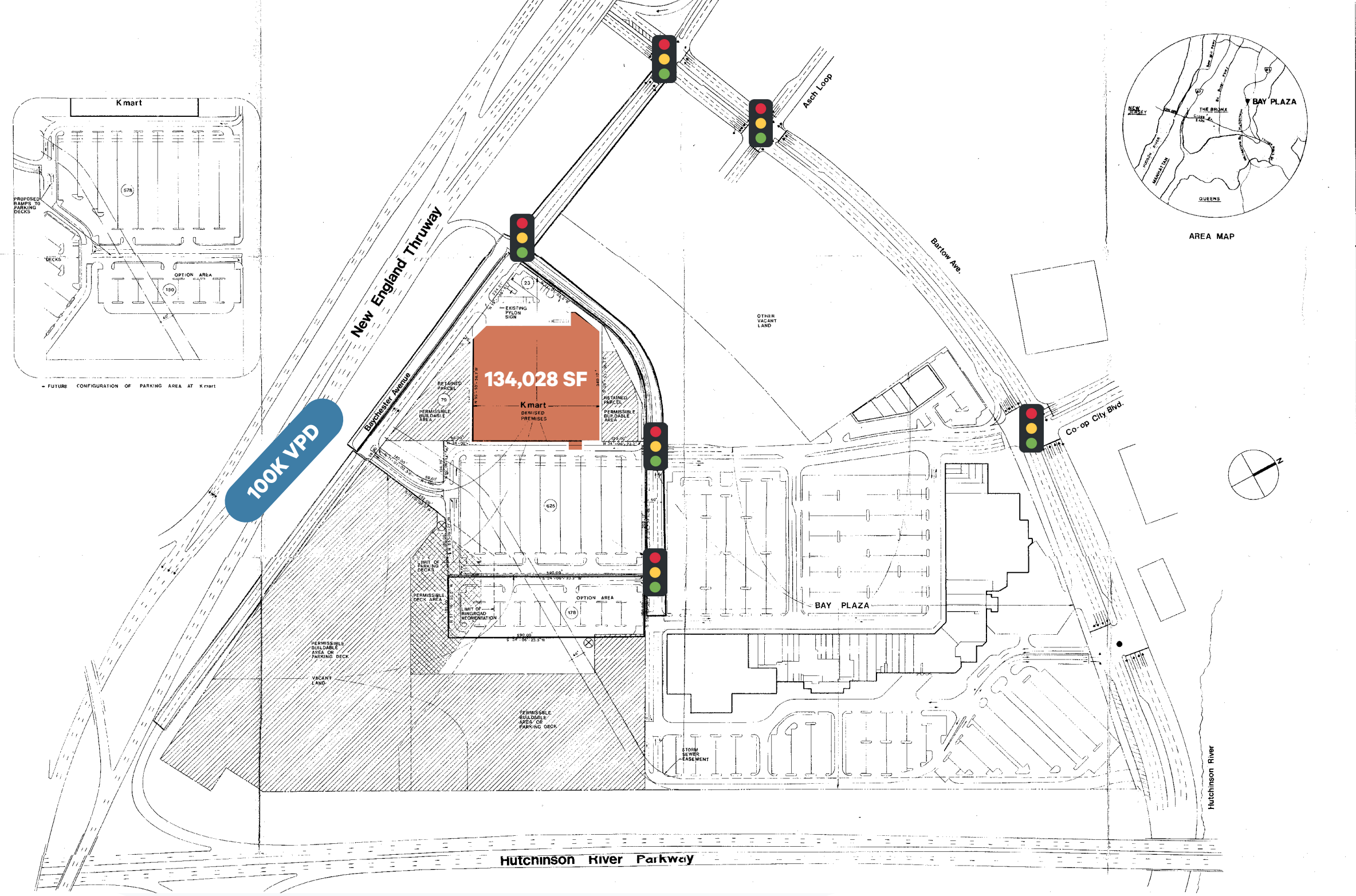
Site Aerial



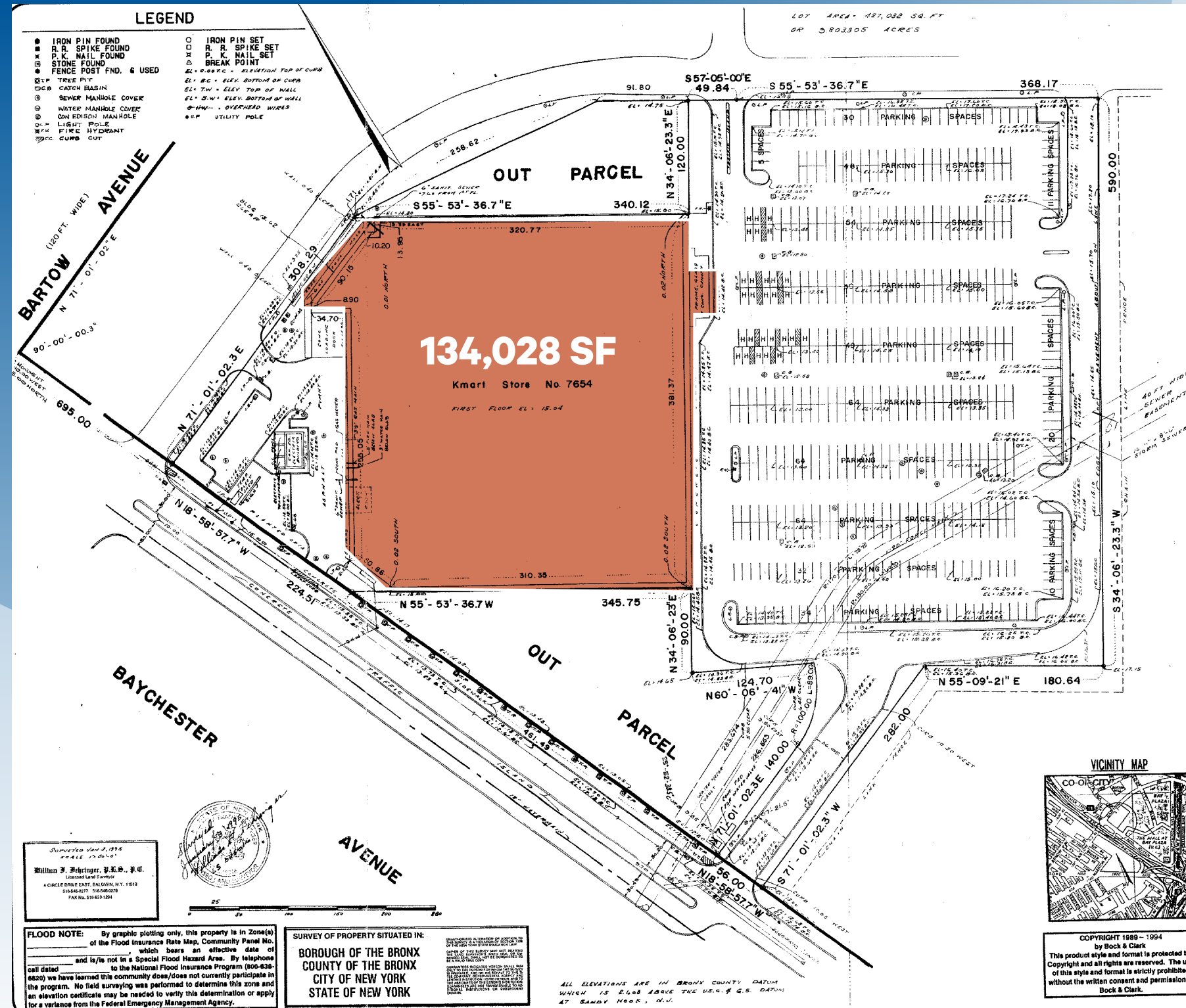
Site Plan



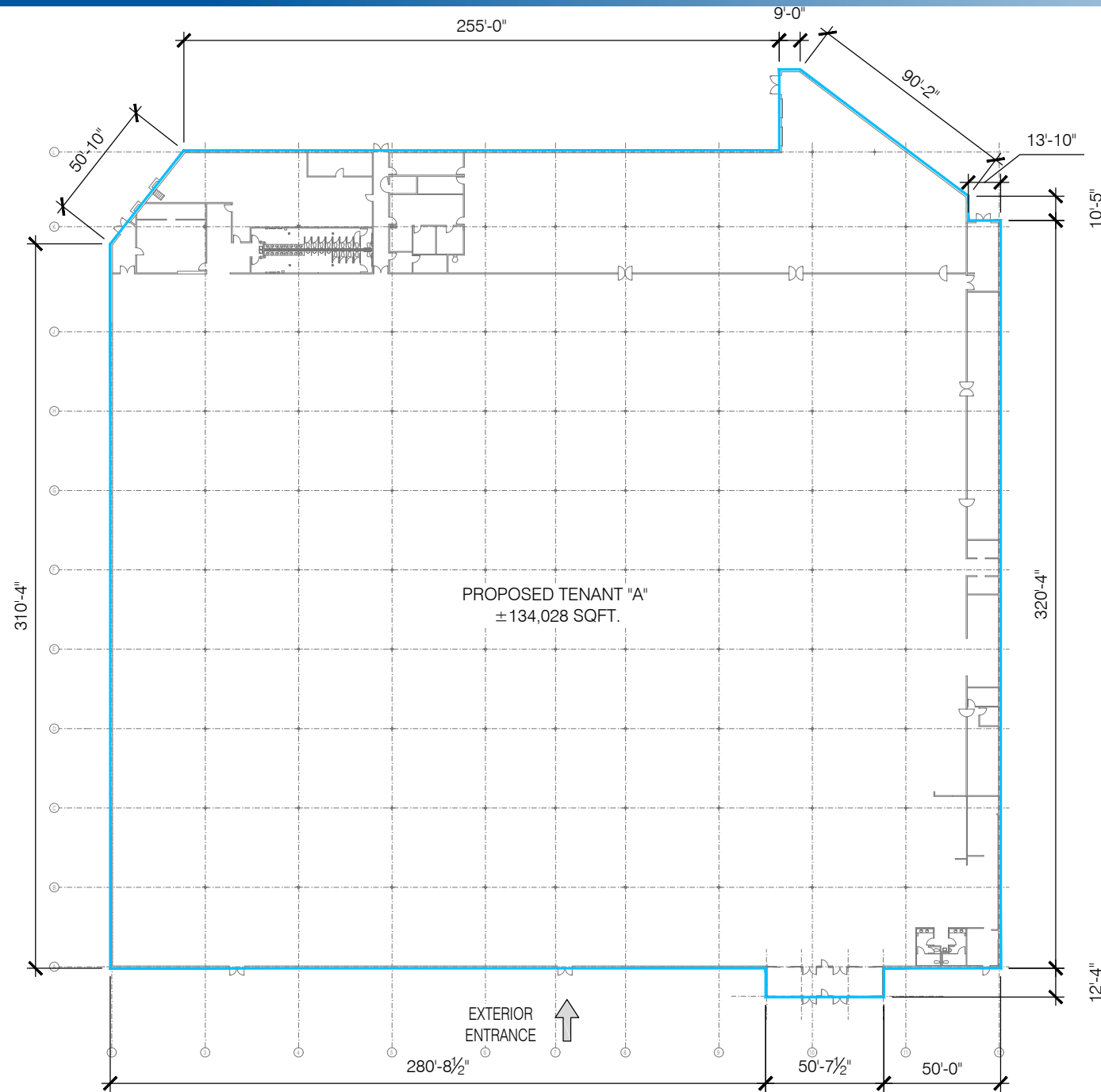
Site Plan



Site Survey



Floor Plan



1 PROPOSED FLOOR PLAN
LOD1



NORTH

SCALE: NTS

300 BAYCHESTER AVENUE

BRONX, NY

RETAIL

FOR LEASE

Bay Plaza

**FOR MORE INFORMATION,
PLEASE CONTACT:**

MARTA VILLA

+1 973 437 2040

marta.villa@cbre.com

LON RUBACKIN

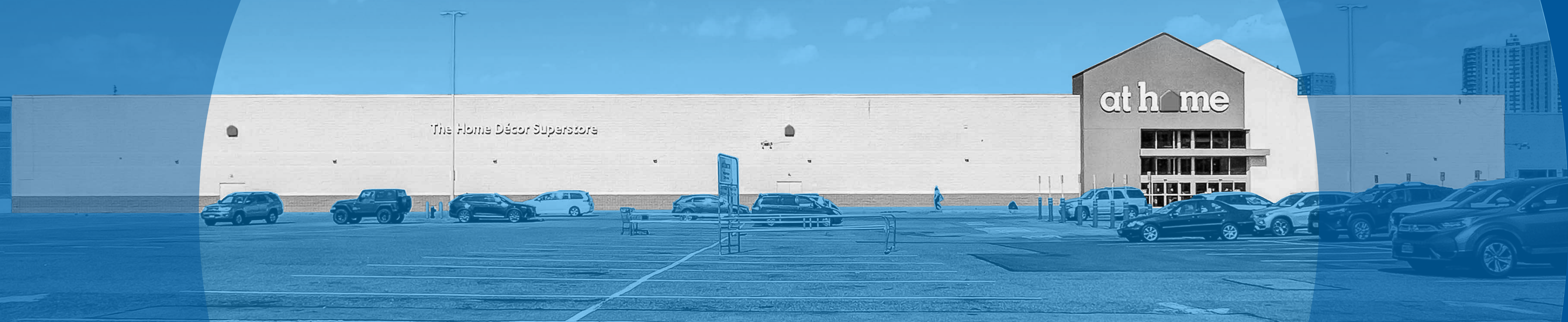
+1 212 984 8195

lon.rubackin@cbre.com

BEVAN COHEN

+1 212 895 0945

bevan.cohen@cbre.com



© 2025 CBRE, Inc. All rights reserved. This information has been obtained from sources believed reliable, but has not been verified for accuracy or completeness. You should conduct a careful, independent investigation of the property and verify all information. Any reliance on this information is solely at your own risk. CBRE and the CBRE logo are service marks of CBRE, Inc. All other marks displayed on this document are the property of their respective owners, and the use of such logos does not imply any affiliation with or endorsement of CBRE.

CBRE