

TRANSFORMCO



AVAILABLE
94,605 SF



FORMER SEARS
AVAILABLE FOR LEASE

108
MONMOUTH ROAD
WEST LONG BRANCH • NEW JERSEY

MARTA VILLA
Senior Vice President
+1 973 715 8385
marta.villa@cbre.com

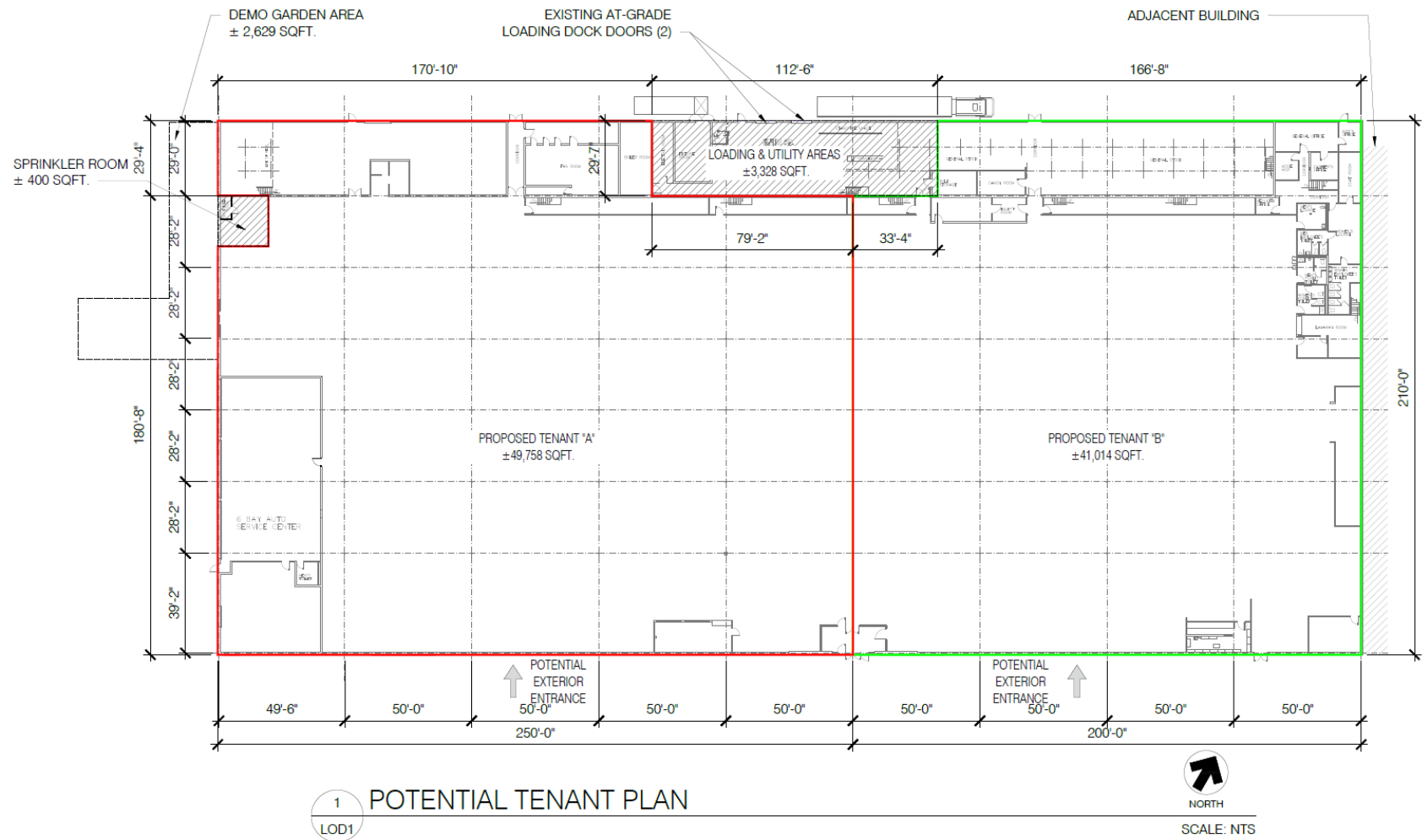
CBRE

PROPERTY HIGHLIGHTS

- 94,605 SF (divisible) available – former Kmart Box available for Sublease thru 2047
- Access NJ Rt. 36 Westbound @ signalized intersection of Monmouth Road
- Co-tenant: Harley Davidson
- Area tenants: ShopRite, Aldi, Dunkin, Home Depot, Ulta
- In close proximity to Monmouth Racetrack, Shore Points and Monmouth University
- Traffic counts: NJ Route 36: 34,975 vpd
- NNN: \$4.07/SF

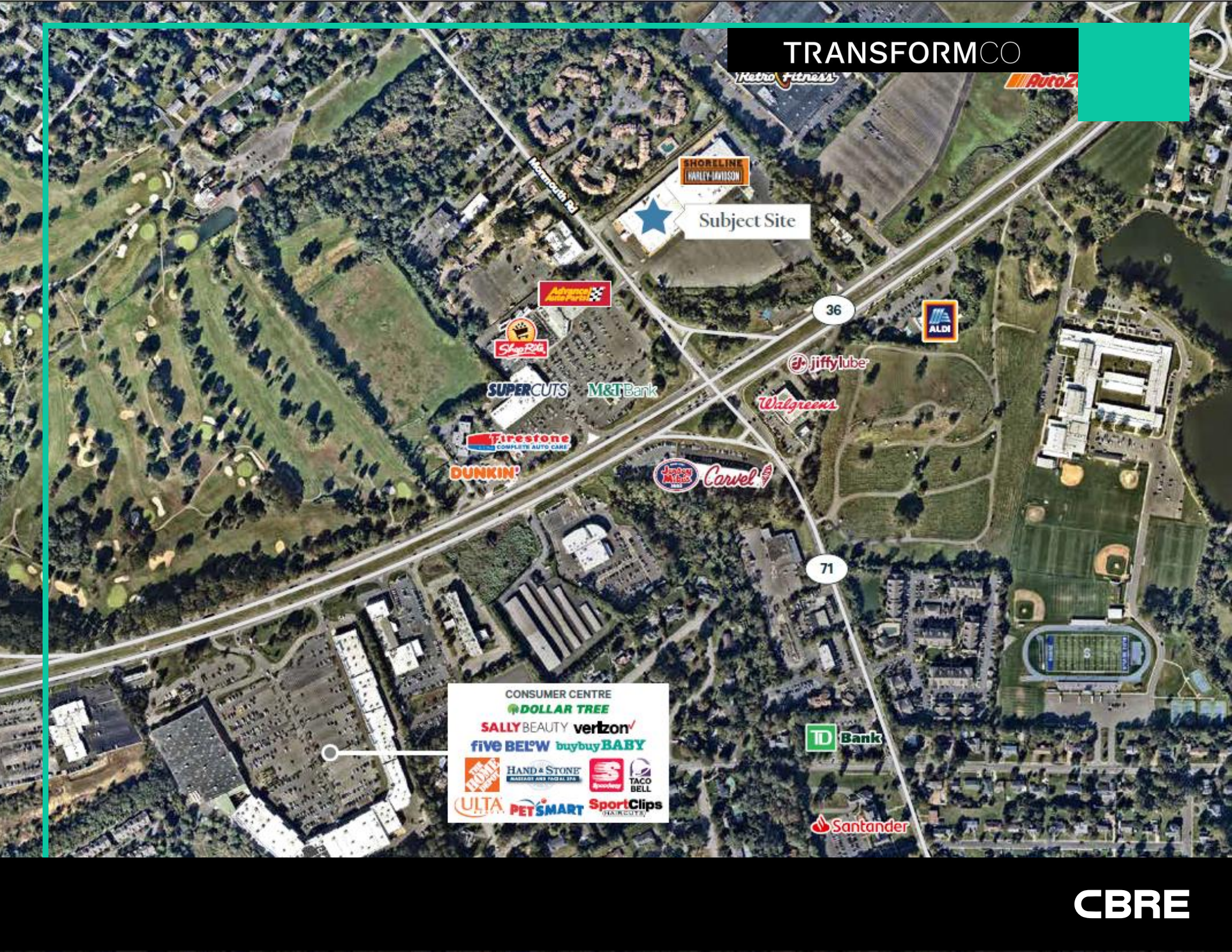


FLOORPLAN



PROPERTY PHOTOS





CONSUMER CENTRE

- DOLLAR TREE
- SALLY BEAUTY
- verizon
- FIVE BELOW
- buybuy BABY
- ULTA
- PET SMART
- Sport Clips
- HAND & STONE
- MASSAGE AND FACIAL SPA
- Speedy
- TACO BELL



CONTACT US

MARTA VILLA

Senior Vice President

+1 973 715 8385

marta.villa@cbre.com