

FRIENDLY CENTER - ± 38,610 SF 2ND FLOOR SPACE ABOVE WHOLE FOODS

3200 W.FRIENDLY AVE | GREENSBORO, NORTH CAROLINA | 27408



CONTACT

Wes Thurmond | 704.644.4595
wthurmond@providencegroup.com



THE PROVIDENCE GROUP
EXCELLENCE IN RETAIL REAL ESTATE

300 West Summit Ave | Suite 250 | Charlotte, North Carolina 28203
WWW.PROVIDENCEGROUP.COM

FOR LEASE

PROUD PARTNER
XTEAM
RETAIL ADVISORS

FRIENDLY CENTER - ± 38,610 SF 2ND FLOOR SPACE ABOVE WHOLE FOODS

3200 W.FRIENDLY AVE | GREENSBORO, NORTH CAROLINA | 27408

PROPERTY / LEASE INFORMATION

This space is part of the Friendly Center, which is one of the largest open air shopping centers in the Triad.

The property is located within the 126 acre development which included over 90 best in class retailers.

The total size of the project is over 1 million square feet.

Anchor tenants at the shopping center include Whole Foods, Macy's, Flemings, REI, Lululemon, Old navy, Chic Fil A, Apple Store, and others.

PROPERTY HIGHLIGHTS

±38,610 SF 2nd floor above Whole Foods

±16'3" to roof beam

±18'5" to roof deck

DEMOGRAPHICS (2023)

	1 MILE	3 MILE	5 MILE
POPULATION	6,143	86,797	227,243
AVERAGE HH INCOME	\$143,010	\$105,137	\$88,066
MEDIAN HH INCOME	\$114,643	\$78,575	\$64,295
BUSINESS ESTABLISHMENTS	1,072	7,635	13,739
DAYTIME EMPLOYMENT	12,630	68,444	121,553

2021 TRAFFIC COUNTS (NCDOT)

18,000 VPD on W Friendly Ave



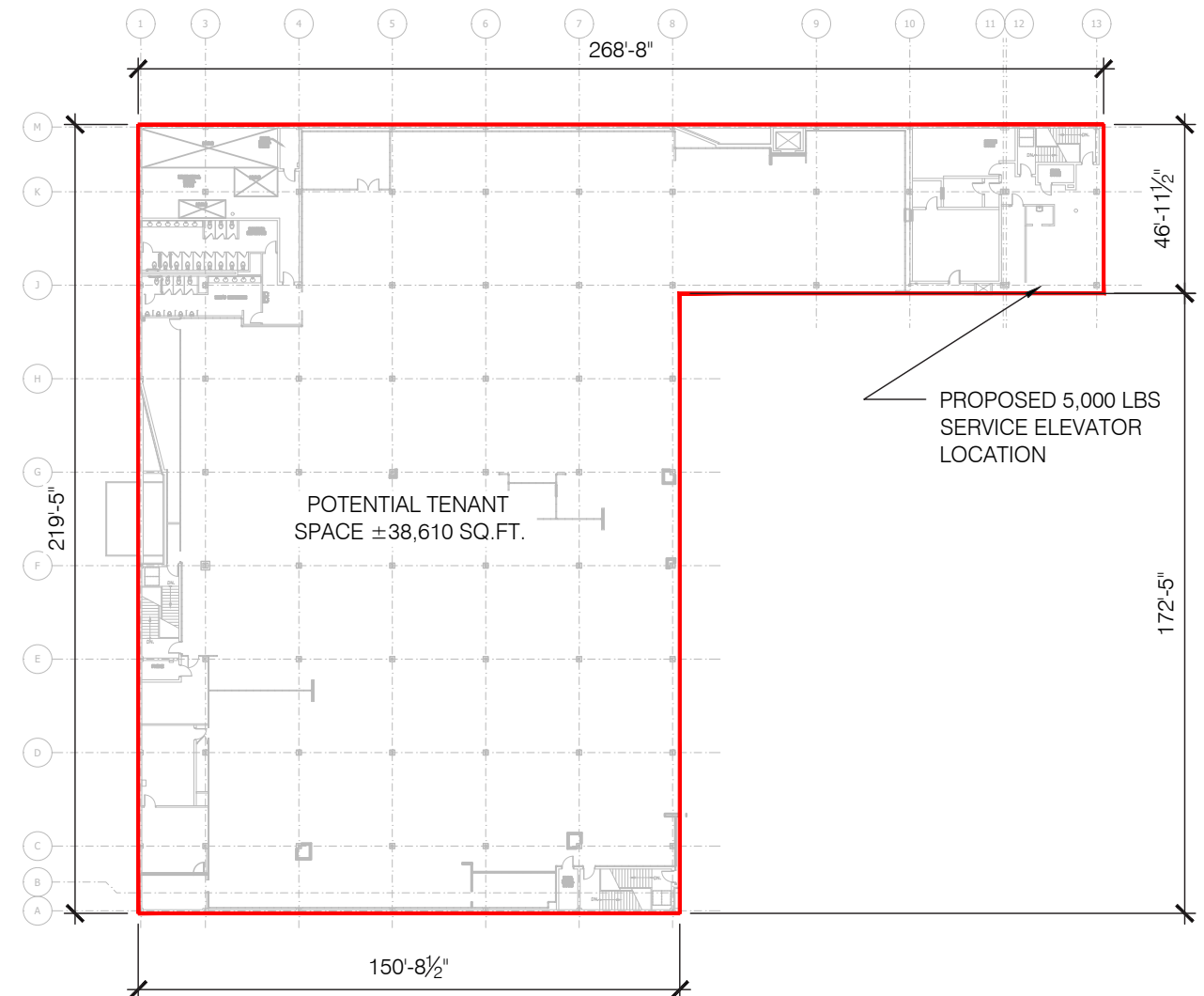
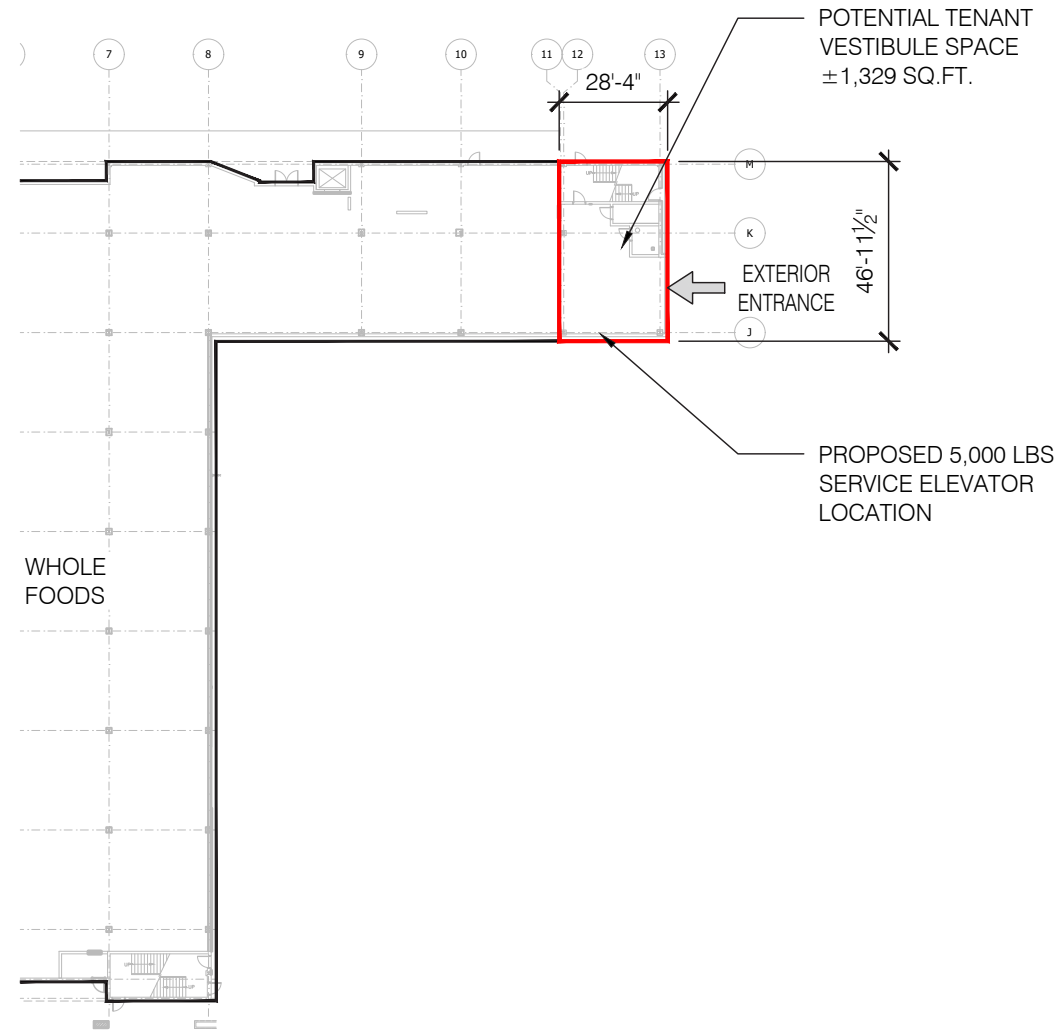
CONTACT

Wes Thurmond | 704.644.4595
wthurmond@providencegroup.com

© 2023 The Providence Group. All rights reserved. The information above has been obtained by sources deemed reliable. While we do not doubt its accuracy, we have not verified it and make no guarantee, warranty, or representation of it. It is your responsibility to independently confirm its accuracy and completeness. You and your advisors should conduct a careful, independent investigation of the property to determine to your satisfaction the suitability of the property for your needs.

FRIENDLY CENTER - ± 38,610 SF 2ND FLOOR SPACE ABOVE WHOLE FOODS

3200 W.FRIENDLY AVE | GREENSBORO, NORTH CAROLINA | 27408



CONTACT

Wes Thurmond | 704.644.4595
wthurmond@providencegroup.com



CONTACT

Wes Thurmond | 704.644.4595
wthurmond@providencegroup.com