

Sears Redevelopment at Castleton Square Mall




Up to 84,500 SF Available for Lease

VERITAS
REALTY

6020 E 82nd Street, Indianapolis, IN 46250



PROPERTY HIGHLIGHTS:

DEMOGRAPHICS	 1 MILE	 3 MILE	 5 MILE
Population:	4,274	53,674	172,406
Households:	1,980	25,068	74,742
Employees:	16,754	94,927	138,753
Avg. HH Income:	\$78,624	\$95,228	\$99,428

- Join Hobby Lobby at this exciting Sears redevelopment
- 217,299 SF on 20 acres available for lease
First Floor: Up to 49,900 SF
Second Floor: 84,498 SF
Auto Service: 22,712 SF
- Major anchor to Simon-owned Castleton Square Mall, the largest shopping destination in the state
- Trade area anchored by Costco, Dick's Sporting Goods, Macy's, Von Maur, JCPenney, Best Buy, Floor & Decor, Tesla, Lifetime Fitness, Trader Joe's, TJMaxx, Burlington, and more!
- Multiple Access points from 82nd street and 86th street
- Located inbetween I-69 (159,251 VPD) and I-465 (140,774 VPD).

CONTACT: **Seth Biggerstaff**
T: 317-472-1800
E: Seth@VeritasRealty.com

FOR LEASE

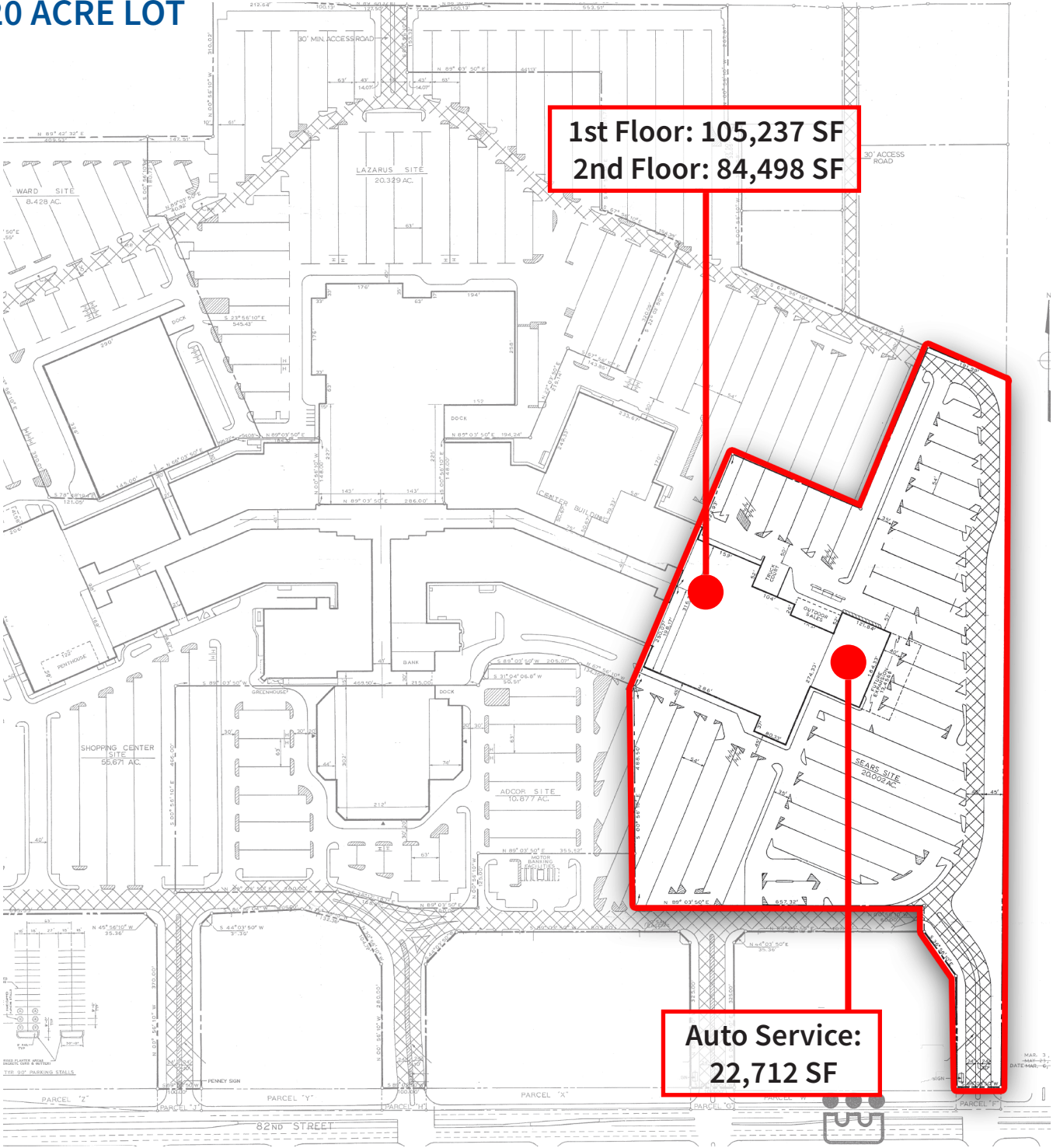
www.VeritasRealty.com

Sears Redevelopment at Castleton Square Mall

Up to 84,500 SF Available for Lease

SITE
PLAN

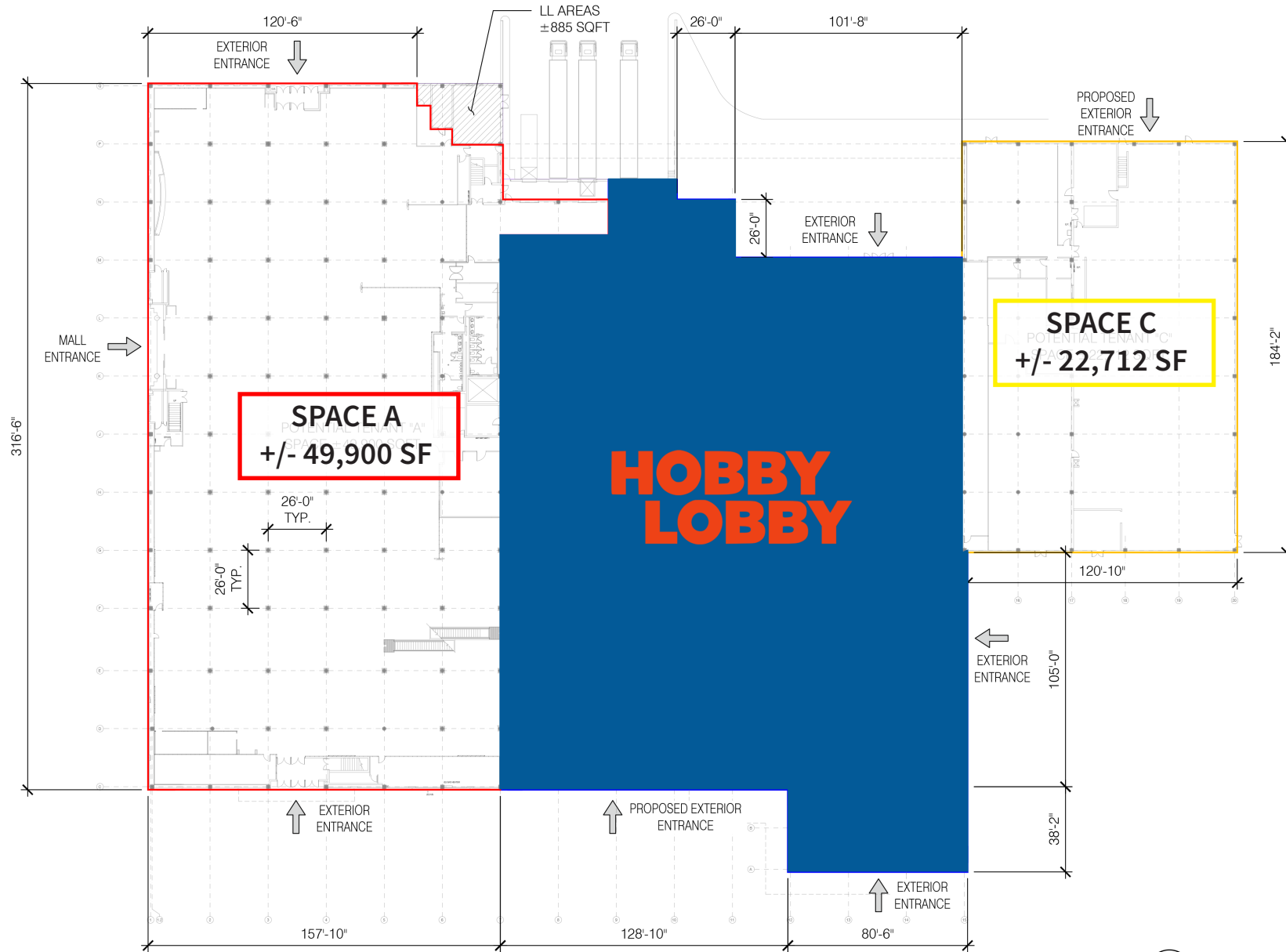
217,299 SF
20 ACRE LOT



Sears Redevelopment at Castleton Square Mall

Up to 84,500 SF Available for Lease

FIRST
FLOOR LOD



PROPOSED
LEVEL 1 PLAN

1
LOD1



SCALE: NTS

Sears Redevelopment at Castleton Square Mall

Up to 84,500 SF Available for Lease

SECOND
FLOOR LOD



Sears Redevelopment at Castleton Square Mall

Up to 84,500 SF Available for Lease

MARKET OVERVIEW



CHAINLINKS
RETAIL ADVISORS

CONTACT:

Seth Biggerstaff

T: 317-472-1800

E: Seth@VeritasRealty.com

VERITAS
REALTY

www.VeritasRealty.com