

Former Kmart

3415 North Elizabeth Street

Pueblo * Colorado



* Top retail trade area in Pueblo Colorado

- * Hard Corner location with excellent exposure to the highest traffic intersection in the city.
- * Aggressive sublease rate - will not demise
- * 350 Surface parking stall 3.16/1,000 ratio

* Total sq/ft 103,738sf

Demographics	1mile	3mile	5mile
Population	17,118	128,569	344,362
Median HH	\$65,945	\$55,747	\$56,932
Daytime Pop	10,797	108,262	293,562

* Asking rent: Contact Broker

Contact :

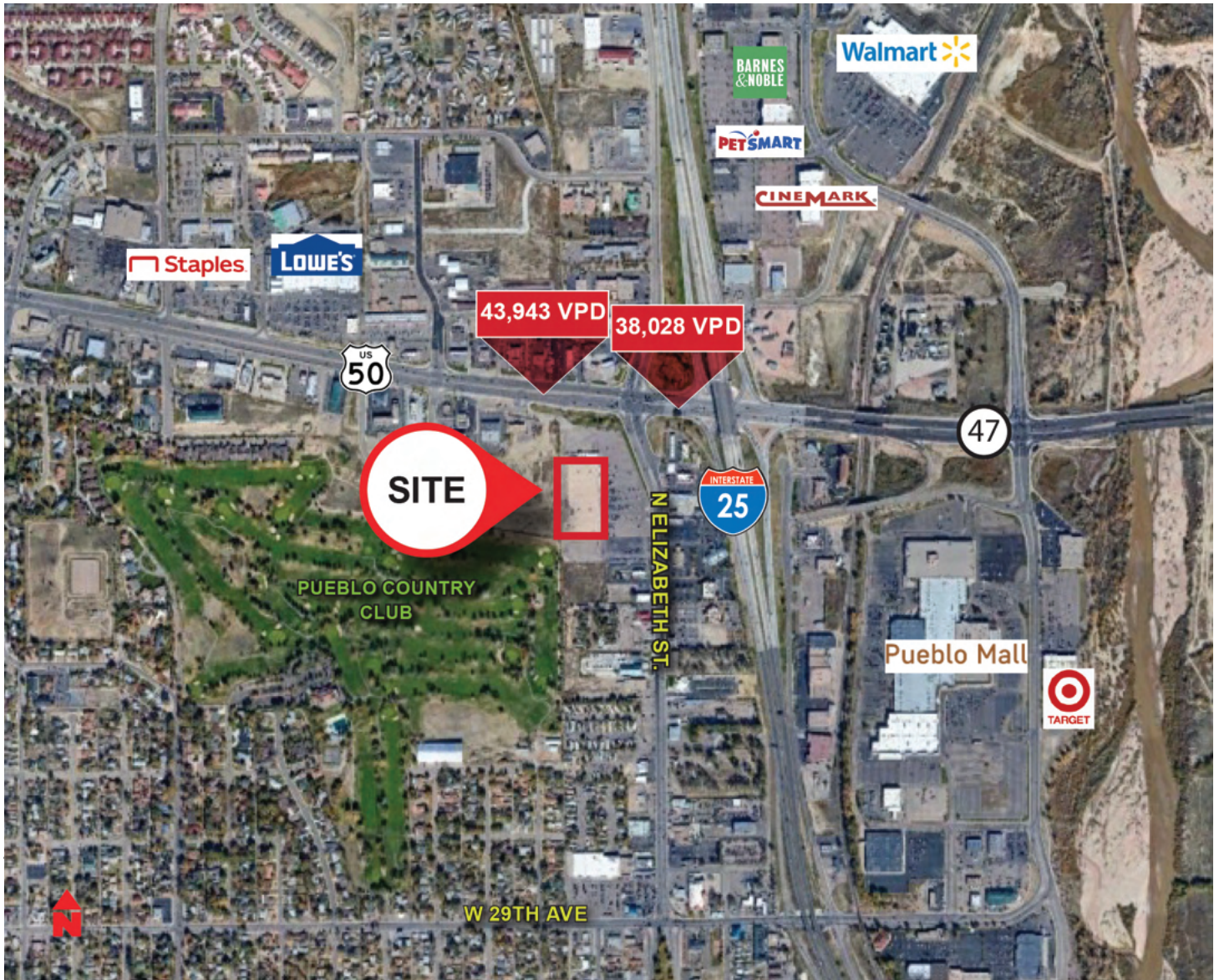
Mike Lindemann
720.490.6806
mike@cmcommercialpartners.com

Carolyn Martinez
303.880.9766
carolyn@cmcommercialpartners.com



Former Kmart

3415 North Elizabeth Street
 Pueblo * Colorado



* Demographics	1mile	3mile	5mile
Population	8,426	52,942	91,754
Median HH	\$65,527	\$55,843	\$53,050
Daytime Pop	12,191	72,028	112,058

Contact:

* Traffic Counts:

US50 & N. Elizabeth (west) 43,943 vpd
 US50 & N. Elizabeth (east) 38,028 vpd



Mike Lindemann
 720.490.6806
 mike@cmcommercialpartners.com

Carolyn Martinez
 303.880.9766
 carolyn@cmcommercialpartners.com