



Available

Property Highlights

- One of very few retailer centers in town with limited competition
- Co-Anchored by a grocery store, Webster's Marketplace
- Situated within a 5-minute drive of Ripon College
- Favorable zoning allows a wide variety of uses; Kmart lease allows for any lawful use

Property Description

Opportunity to acquire a lease-hold interest at below market rent on a former Kmart site in Ripon, Wisconsin. Ripon draws consumers from a wide area and is a college town, home to Ripon College.

Key Retailers



Ripon KMART Plaza

1200 W Fond Du Lac St
Ripon, WI 54971

Larry Kilduff

414.944.2133

larry.kilduff@am.jll.com

WI #43707-90

Nick Hepner

414.944.2107

nick.hepner@am.jll.com

WI #84494-94

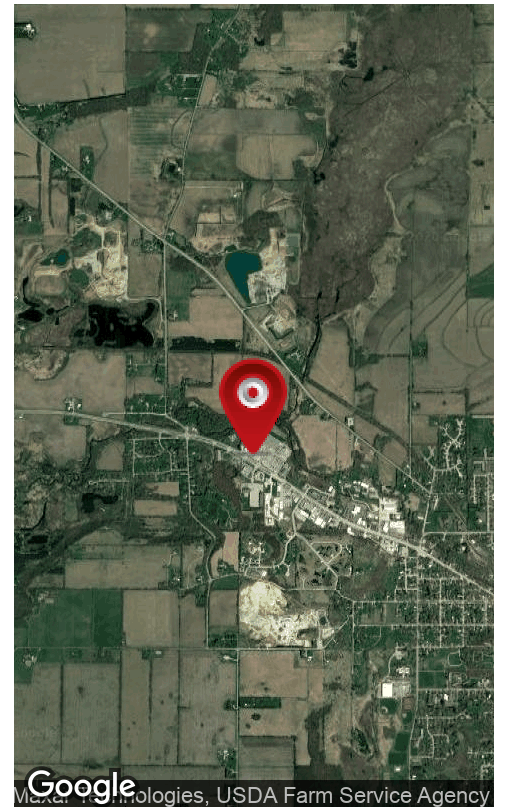
us.jll.com/retail





Property Data

# of Levels	1
Parking	Surface
Zoning	B-2 Highway Business District





Google

Map data ©2020 Imagery ©2020 , Maxar Technologies, USDA Farm Service Agency