

107,375 sf Building Available

Former Kmart



DUEMELANDS
COMMERCIAL REAL ESTATE

2625 State Street - Bismarck, North Dakota

Bismarck, North Dakota



Competitive Lease Rate

Property Information

- ◆ 107,375 SF building
- ◆ Anchor & Junior Anchor opportunity
- ◆ Rear loading dock
- ◆ 11.48 acres
- ◆ Zoned CG - Commercial

Area Information

- ◆ Located in new growth sector of Bismarck
- ◆ Close proximity to I-94
- ◆ Strong area traffic counts
 - ◇ State Street 33,340 vpd
- ◆ Located along main retail corridor



Duemelands Commercial Real Estate
301 E. Thayer Avenue - Bismarck, ND 58501
Phone: (701) 221-2222
www.duemelands.com

Jill Duemeland, CCIM
CEO & President
Phone: 701.221.9033
jill@duemelands.com

April Eide, CCIM
Vice President of Brokerage
Direct: 701.223.5863
april@duemelands.com

Parcel Map

Available



Subject Property
107,375 sf Building
11.48 acre lot



Duemelands Commercial Real Estate
301 E. Thayer Avenue - Bismarck, ND 58501
Phone: (701) 221-2222
www.duemelands.com

Jill Duemeland, CCIM
CEO & President
Phone: 701.221.9033
jill@duemelands.com

April Eide, CCIM
Vice President of Brokerage
Direct: 701.223.5863
april@duemelands.com

Area Information

Available

Bismarck-Mandan Major Employers

⇒ City, State, Federal Government	6,788	Government
⇒ Sanford Health	3,284	Healthcare
⇒ Bismarck/Mandan Public Schools	2,884	Education
⇒ CHI St. Alexius	2,044	Healthcare
⇒ Bismarck State College	719	Education
⇒ Aetna	660	Health Insurance
⇒ University of Mary	642	Education
⇒ Housing Industry Training (HIT)	641	Disability Services
⇒ MDU Resource Group	592	Energy
⇒ Bobcat/Doosan Company	582	Manufacturing
⇒ Missouri Slope Lutheran Care Center	560	Elderly Services
⇒ Basin Electric Power Coop	560	Energy
⇒ Mid-Dakota Clinic	550	Health Care
⇒ Dan's Supermarkets	476	Food Retail

Area Demographics

<i>2625 State Street Bismarck, North Dakota</i>	1-mile	3-mile	5-mile	7-mile
Population	10,204	63,314	85,790	112,013
Number of Households	5,106	28,420	37,279	47,586
Average HH Income	\$68,248	\$75,091	\$78,927	\$79,942
Number of Households w/ Average Income of \$50K+	2,835	16,805	22,995	29,886
Percent of Population w/ Associates Degree +	47.6%	50.6%	51.2%	50.3%
Number of Businesses	620	3,774	4,809	5,536
Daytime Population	9,559	57,402	68,533	74,575



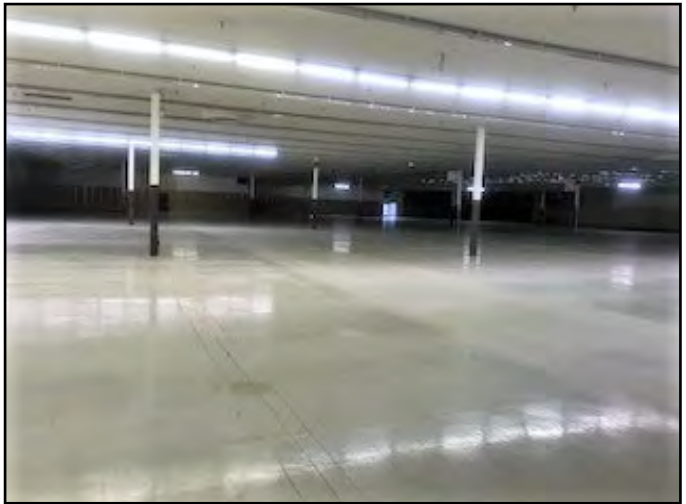
Duemelands Commercial Real Estate
301 E. Thayer Avenue - Bismarck, ND 58501
Phone: (701) 221-2222
www.duemelands.com

Jill Duemeland, CCIM
CEO & President
Phone: 701.221.9033
jill@duemelands.com

April Eide, CCIM
Vice President of Brokerage
Direct: 701.223.5863
april@duemelands.com

→ Pictures

Available



Duemelands Commercial Real Estate
301 E. Thayer Avenue - Bismarck, ND 58501
Phone: (701) 221-2222
www.duemelands.com

Jill Duemeland, CCIM
CEO & President
Phone: 701.221.9033
jill@duemelands.com

April Eide, CCIM
Vice President of Brokerage
Direct: 701.223.5863
april@duemelands.com