



Available

Property Highlights

- Exceptional access and visibility from Douglas Avenue
- Benefits from traffic generating co-tenants such as Pick N' Save, Walgreens and McDonald's
- Long-term leasehold interest through 2067
- High household incomes in the area - over \$90,000

Property Description

Opportunity to acquire a long-term, lease-hold interest on a former Kmart site in Racine, Wisconsin. Asset is located in a high-quality and institutionally owned shopping center that is home to Pick N Save, Walgreens and McDonald's.

Key Retailers

Pick 'n Save *Walgreens*

Kmart - Racine, WI

5141 Douglas Ave
Racine, WI 53402

Larry Kilduff

414.944.2133

larry.kilduff@am.jll.com

WI #43707-90

Nick Hepner

414.944.2107

nick.hepner@am.jll.com

WI #84494-94

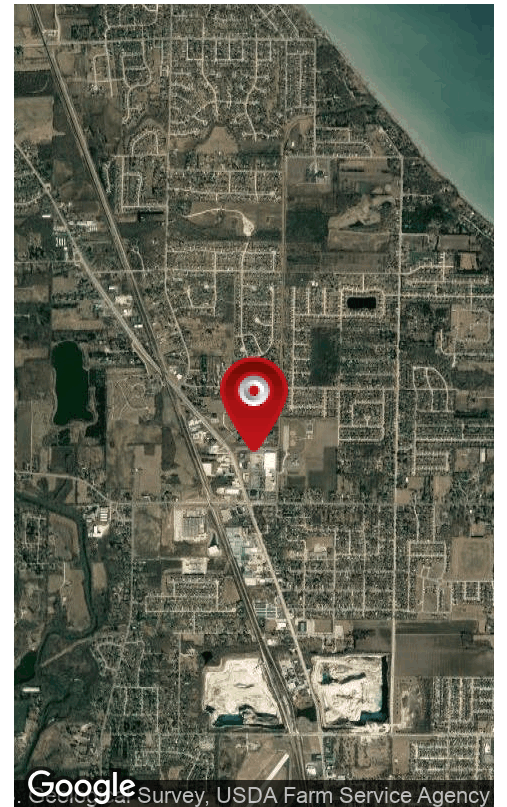
us.jll.com/retail





Property Data

# of Levels	1
Parking	Surface
Zoning	B-3 Commercial Service District





Google

Map data ©2020 Imagery ©2020, Maxar Technologies, U.S. Geological Survey, USDA Farm Service Agency