

# FORMER KMART AVAILABLE

1500 W LINCOLN HWY, NEW LENOX, IL

FOR SALE



## PROPERTY HIGHLIGHTS

- Freestanding Building off busy Lincoln Hwy/Route 30
- Directly West of I-80 Interchange with Strong Visibility from Interstate
- Multiple Access Points off Lincoln Hwy/Route 30
- Affluent Trade Area with Average HHI of \$105K within 3 miles



## SITE DETAILS

**Price:** CONTACT BROKER

**Building Size:** 84,140 SF

**Site Size:** 15.46 Acres

**Property Format:** Kmart

**Zoning:** C-2

**Parking Spaces:** 410

**Year Built:** 1977

**Building Configuration:** Freestanding

**Ownership:** Owned

### Adjacent Developments

**North:** Forest Preserve

**South:** Interstate

**East:** Interstate, AMC Theatre, Jewel-Osco

**West:** Providence Catholic High School

**CONTACT**  
INFORMATION:

**STEVEN BAER**  
sbaer@metrocre.com  
+1.847.412.9898

56 Skokie Valley Road  
Highland Park, Illinois 60035

www.MetroCRE.com

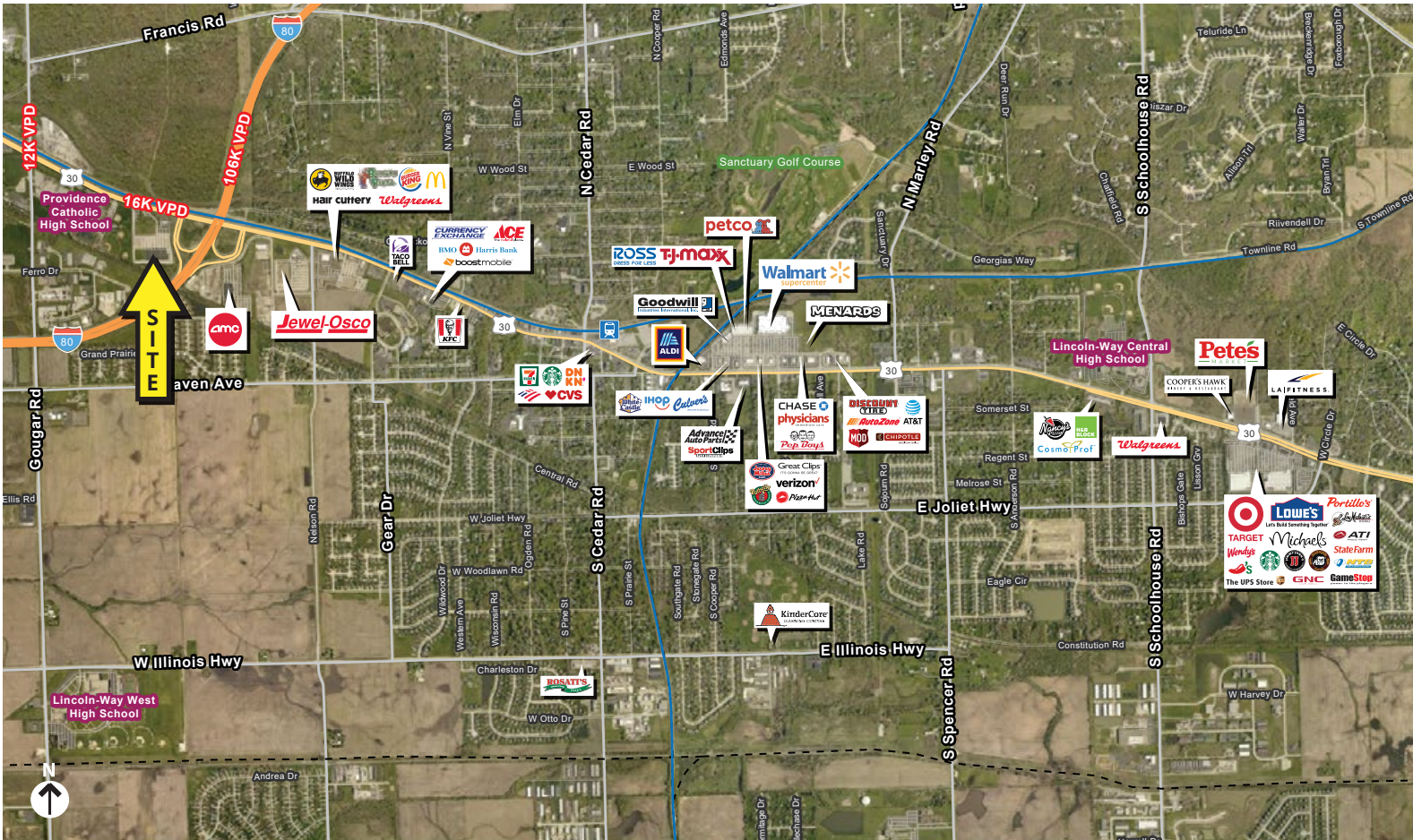


**METRO**  
COMMERCIAL REAL ESTATE

# FORMER K MART AVAILABLE

1500 W LINCOLN HWY, NEW LENOX, IL

FOR SALE

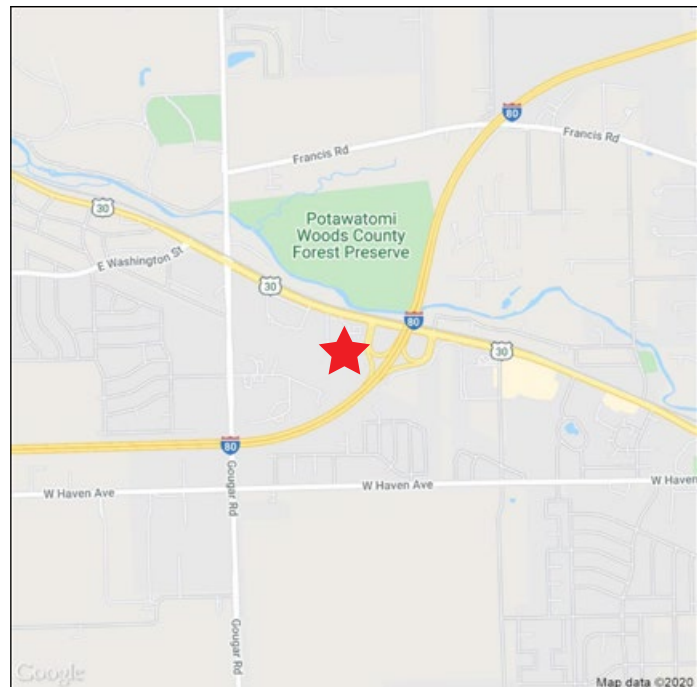


## DEMOGRAPHICS

	1 MILE	3 MILES	5 MILES
TOTAL POPULATION	2,906	37,156	104,738
DAYTIME POPULATION	3,357	26,453	69,901
AVERAGE HH INCOME	\$97,081	\$105,706	\$95,802
AVERAGE AGE	45	38	36.5

## TRAFFIC COUNTS

LINCOLN HWY / ROUTE 30	16,521 VPD
I-80	106,200 VPD
GOUGAR RD	12,099 VPD



CONTACT  
INFORMATION:

**STEVEN BAER**  
sbaer@metrocre.com  
+1.847.412.9898

56 Skokie Valley Road  
Highland Park, Illinois 60035

www.MetroCRE.com



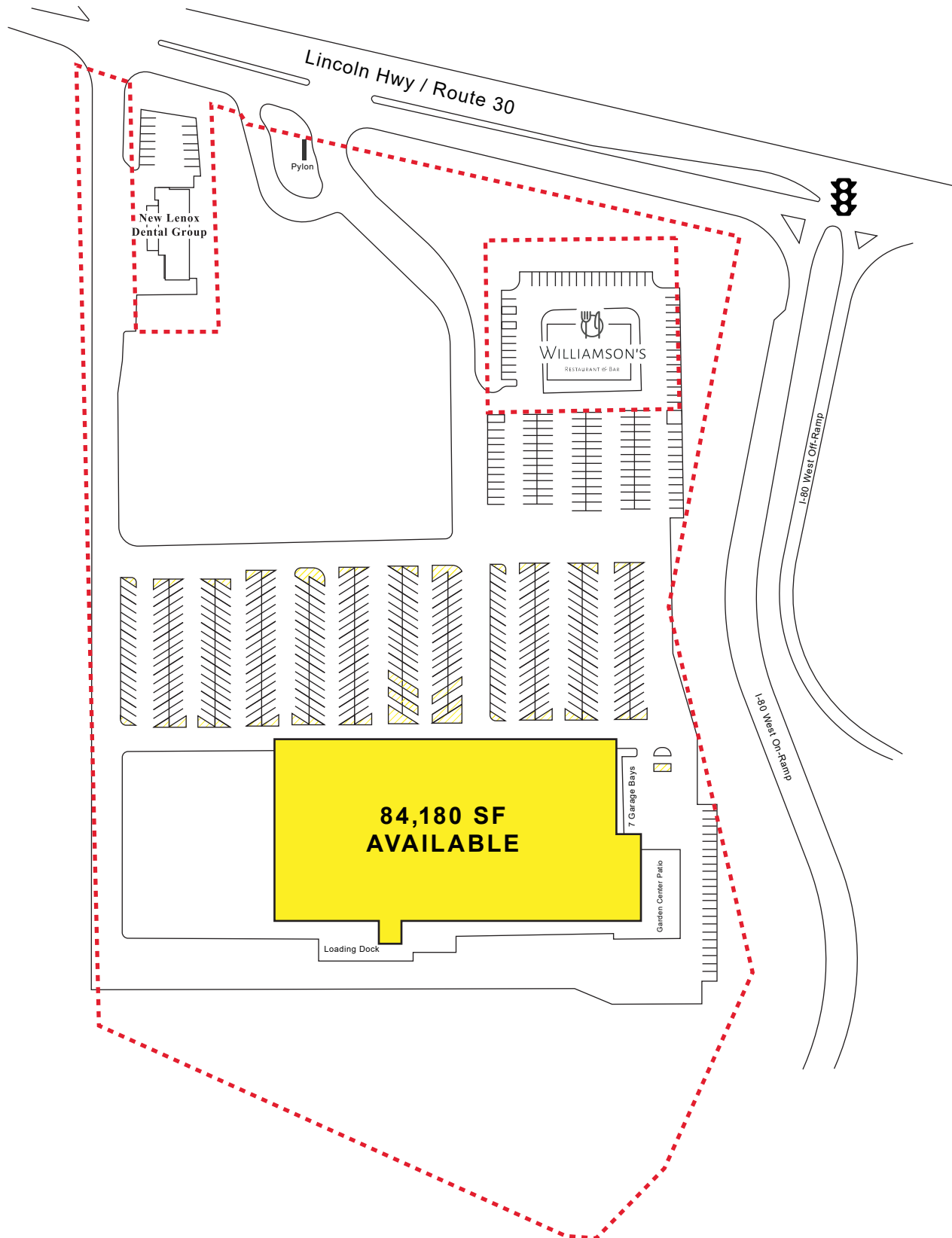
**METRO**  
COMMERCIAL REAL ESTATE



# FORMER K MART AVAILABLE

1500 W LINCOLN HWY, NEW LENOX, IL

FOR SALE



**DISCLAIMER:** The information contained herein is obtained from sources believed to be reliable. However, Metro Commercial Real Estate make no guarantees, warranties or representations as to the completeness or accuracy thereof. The presentation of this property is submitted subject to errors, omissions, change of price or conditions, and is subject to prior sale, lease or withdrawal without notice.

56 Skokie Valley Road  
Highland Park, Illinois 60035

[www.MetroCRE.com](http://www.MetroCRE.com)



**METRO**  
COMMERCIAL REAL ESTATE