

# Available

## Property Highlights

- Bi-level Sears box that totals 221,157 square feet, first floor with 156,220 square feet and second floor with 64,937 square feet
- Located at an enclosed mall with direct access from 95th St and Ridgeland Avenue
- Great visibility from 95th St that boasts strong daily traffic counts of 44,300 CPD
- Property benefits from strong demographics and a dense residential population
- Pending approvals, two outlot opportunities available at signalized entrance into the mall, off of 95th street

## Sears - Chicago Ridge Mall

6501 95th St  
Chicago Ridge, IL 60415

---

**Jose Gonzalez**

312.228.2155

[jose.o.gonzalez@am.jll.com](mailto:jose.o.gonzalez@am.jll.com)

IL #475.149044

---

## Key Retailers

**KOHL'S**

**BED BATH &  
BEYOND**



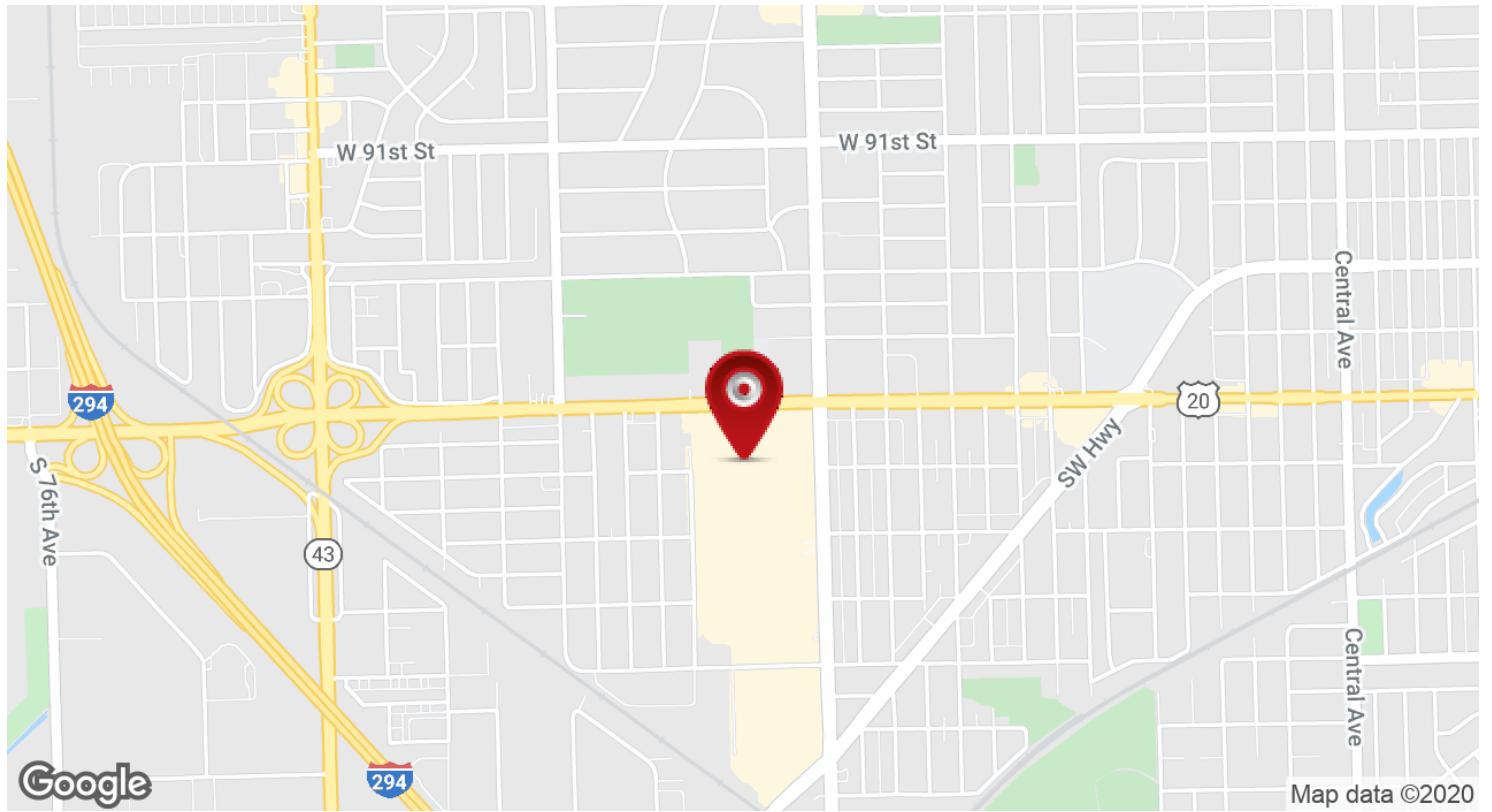
*Michaels*



**Marshalls**

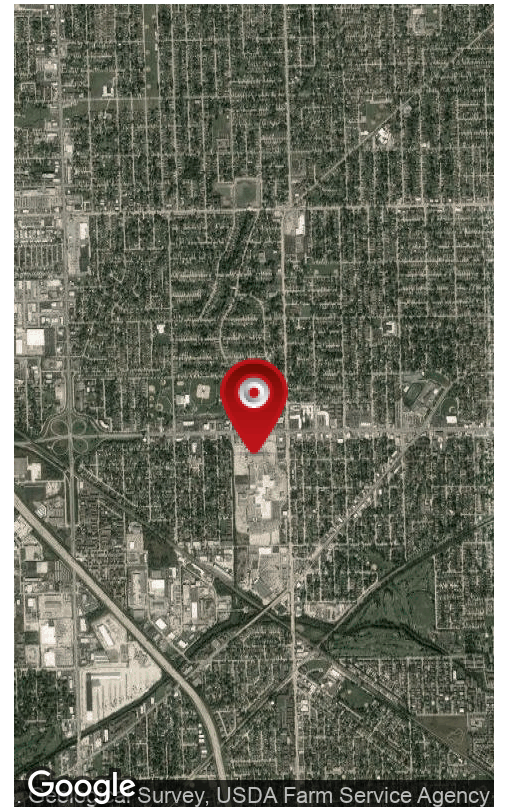
[us.jll.com/retail](http://us.jll.com/retail)

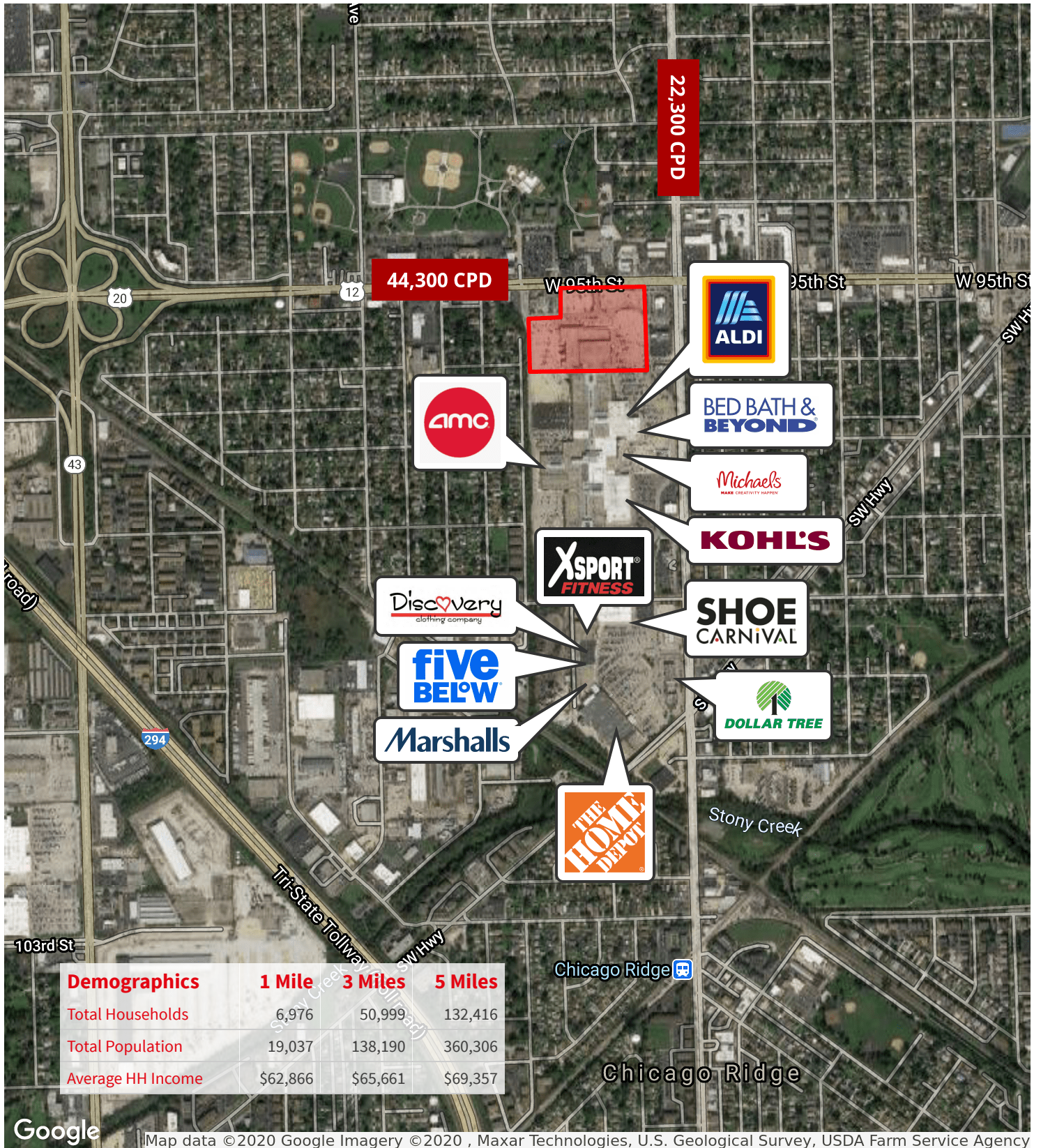


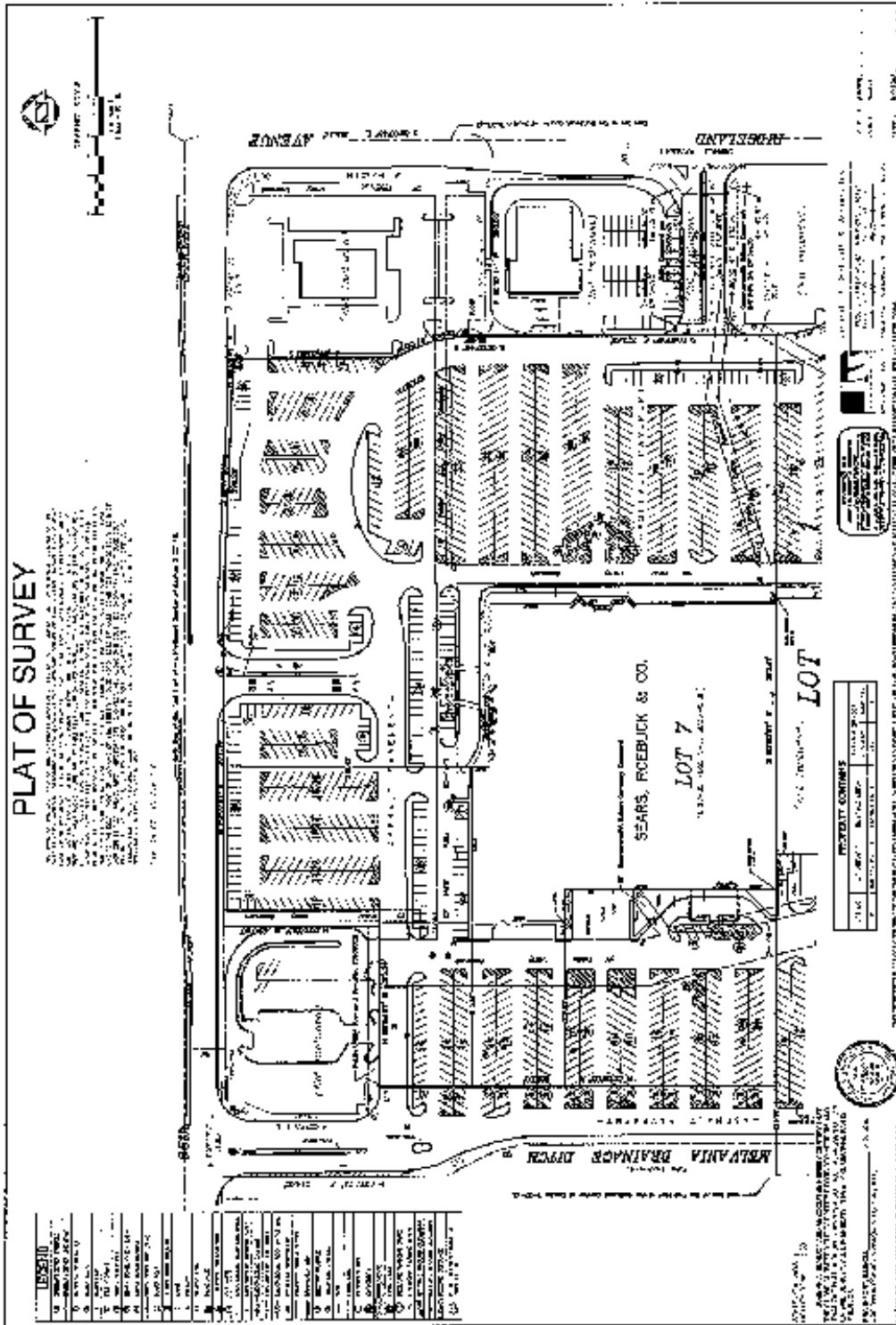


**Property Data**

# of Levels	2
Parking	Surface
Zoning	C-3 Commercial Business District







Although information has been obtained from sources deemed reliable, neither Owner nor JLL makes any guarantees, warranties or representations, express or implied, as to the completeness or accuracy as to the information contained herein. Any projections, opinions, assumptions or estimates used are for example only. There may be differences between projected and actual results, and those differences may be material. The property may be withdrawn without notice. Neither Owner nor JLL accepts any liability for any loss or damage suffered by any party resulting from reliance on this information. If the recipient of this information has signed a confidentiality agreement regarding this matter, this information is subject to the terms of that agreement. ©2019 Jones Lang LaSalle IP, Inc. All rights reserved.