



# Available

## Property Highlights

- Situated near Myrtle Beach's main entrance at the intersection of Hwy-17 (46,800 VPD) and Hwy-501 (60,400 VPD)
- Myrtle Beach was voted No. 1 "Best Place People are Moving" by U.S. News & World Report (2018) and No.7 "Most Excellent Cities for Experiences" by Trip Advisor (2018)
- Horry County, South Carolina, home to Myrtle Beach, is the third most populous county in the state and is well-known for its dynamic economy. Home to approximately 344,000 residents, roughly 274 people per square mile, Horry County represents a low unemployment rate of 4.2%.
- The 142,722 SQFT store is currently occupied by Sears, and faces HWY-17, easily the most attractive anchor space in the entire Coastal Grand Mall

## Property Description

JLL is pleased to offer the Sears box and Sears Auto Center located in Coastal Grand Mall in Myrtle Beach, SC. Coastal Grand Mall is a super-regional shopping mall that is the second largest mall in the state, with 1,047,732 square feet of retail space. The mall is one level, but most anchors, including the Sears box are two levels. The Sears Auto Center is ideally positioned along HWY-17, having outstanding access and visibility from this major thoroughfare.

## Key Retailers



[us.jll.com/retail](https://us.jll.com/retail)



## Sears - Coastal Grand Mall

1200 Coastal Grand Cir  
Myrtle Beach, SC 29577

**Thomas Kolarczyk**

704.526.2813

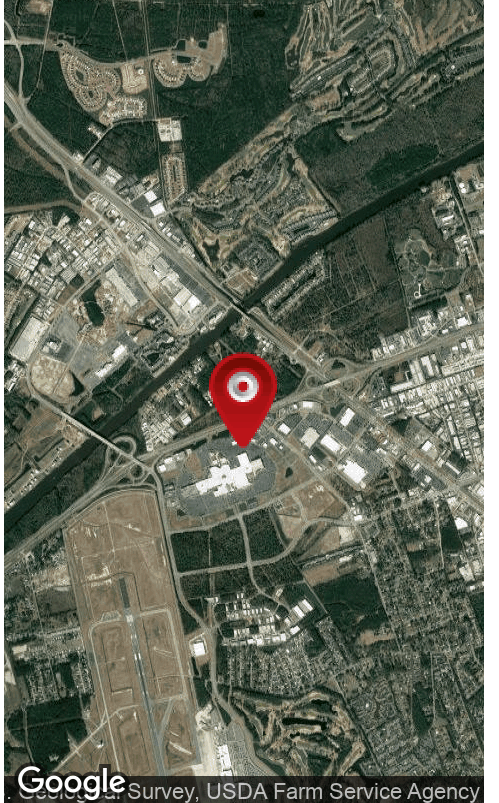
[tom.kolarczyk@am.jll.com](mailto:tom.kolarczyk@am.jll.com)

NC #276931



**Demographics**

	<b>1 Mile</b>	<b>3 Miles</b>	<b>5 Miles</b>
Population	1,979	42,8	95,837
Households	764	17,519	39,255
Average Household Income	\$56,591	\$62,171	\$68,053



Although information has been obtained from sources deemed reliable, neither Owner nor JLL makes any guarantees, warranties or representations, express or implied, as to the completeness or accuracy as to the information contained herein. Any projections, opinions, assumptions or estimates used are for example only. There may be differences between projected and actual results, and those differences may be material. The property may be withdrawn without notice. Neither Owner nor JLL accepts any liability for any loss or damage suffered by any party resulting from reliance on this information. If the recipient of this information has signed a confidentiality agreement regarding this matter, this information is subject to the terms of that agreement. ©2019 Jones Lang LaSalle IP, Inc. All rights reserved.





Map data ©2020 Imagery ©2020, Maxar Technologies, U.S. Geological Survey, USDA Farm Service Agency