

# FORMER SEARS

3000 Mall Road  
Florence, KY 41042

## FOR LEASE OR FOR SALE 11.997 AC Available

### HIGHLIGHTS

- Approximately 67,496 SF on the Upper Level and 67,496 SF on the Lower Level Available For Lease or For Sale
- The Florence Mall is 940,967 SF of retail space along Interstate 75 and is the main retail corridor of northern Kentucky
- Mixed-use redevelopment opportunity ideal for apartments, hotel, office and retail
- Anchors at the mall include Macy's, Macy's Furniture, Cinemark Theater, JCP, BJ's Brewhouse, Olive Garden, Smokey Bones and Quaker Steak as well as many other retail and restaurant users
- Excellent visibility from I-75/71

### TRAFFIC COUNTS

- 153,636 VPD on I-75/71
- 17,741 VPD on Mall Road

### DEMOGRAPHICS

2021 Estimates	1 miles	3 miles	5 miles
Population	6,840	65,213	138,809
Households	2,912	25,759	52,349
Average HH Income	\$73,547	\$78,056	\$88,604
Daytime Employees	7,033	41,394	69,206

CONTACT: 513-784-1106

Jason Gibson jgibson@anchor-associates.com

Amy Holter aholter@anchor-associates.com

Anchor  
ASSOCIATES



ANCHOR  
ASSOCIATES

4901 Hunt Road  
Suite 102  
Cincinnati, OH 45209

513-784-1106

[www.anchor-associates.com](http://www.anchor-associates.com)

A MEMBER OF  
**CHAINLINKS**  
RETAIL ADVISORS

FORMER SEARS  
3000 Mall Road  
Florence, KY 41042

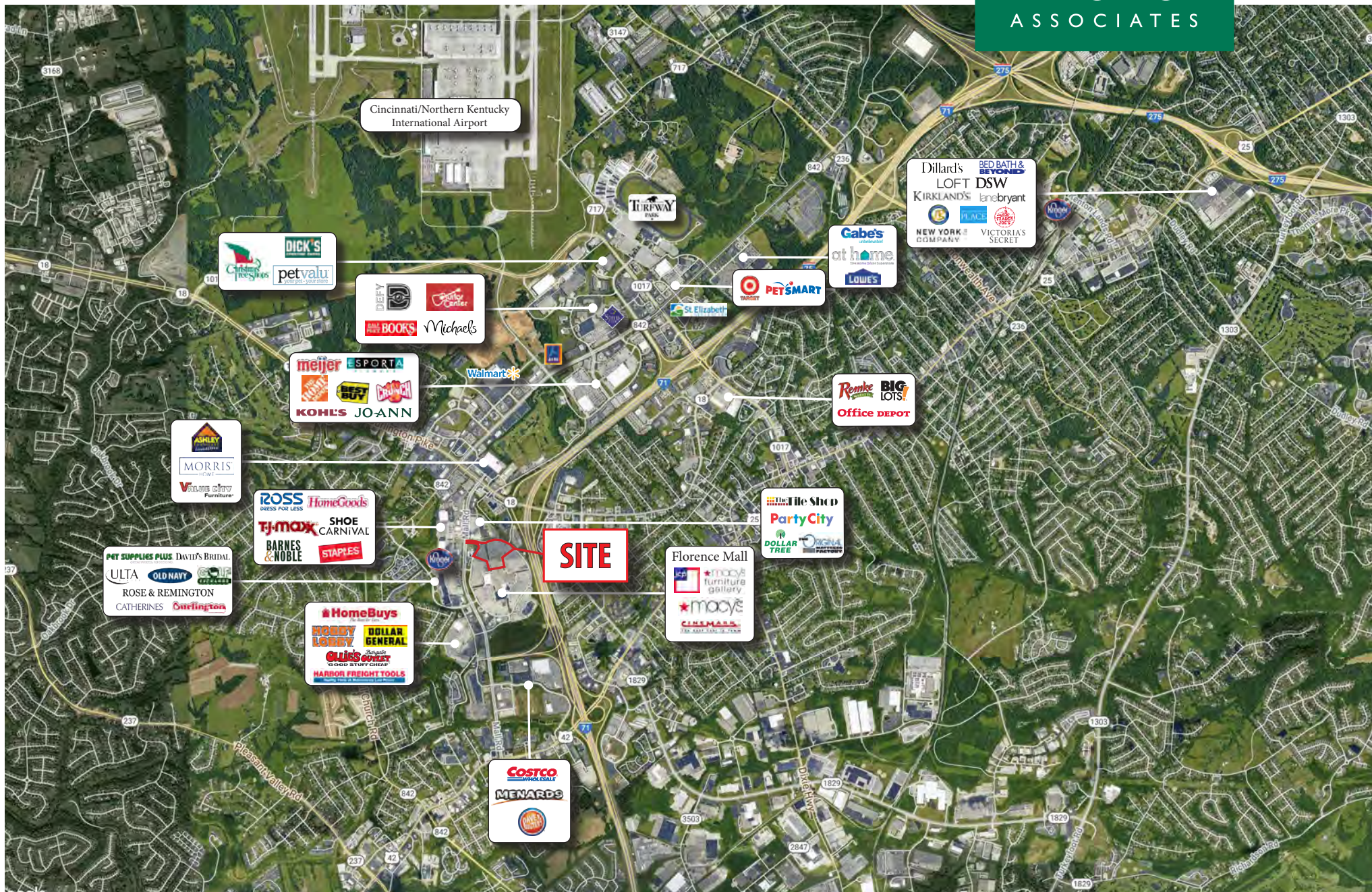
Anchor  
ASSOCIATES



3000 Mall Road  
Florence, KY 41042

3000 Mall Road  
Florence, KY 41042

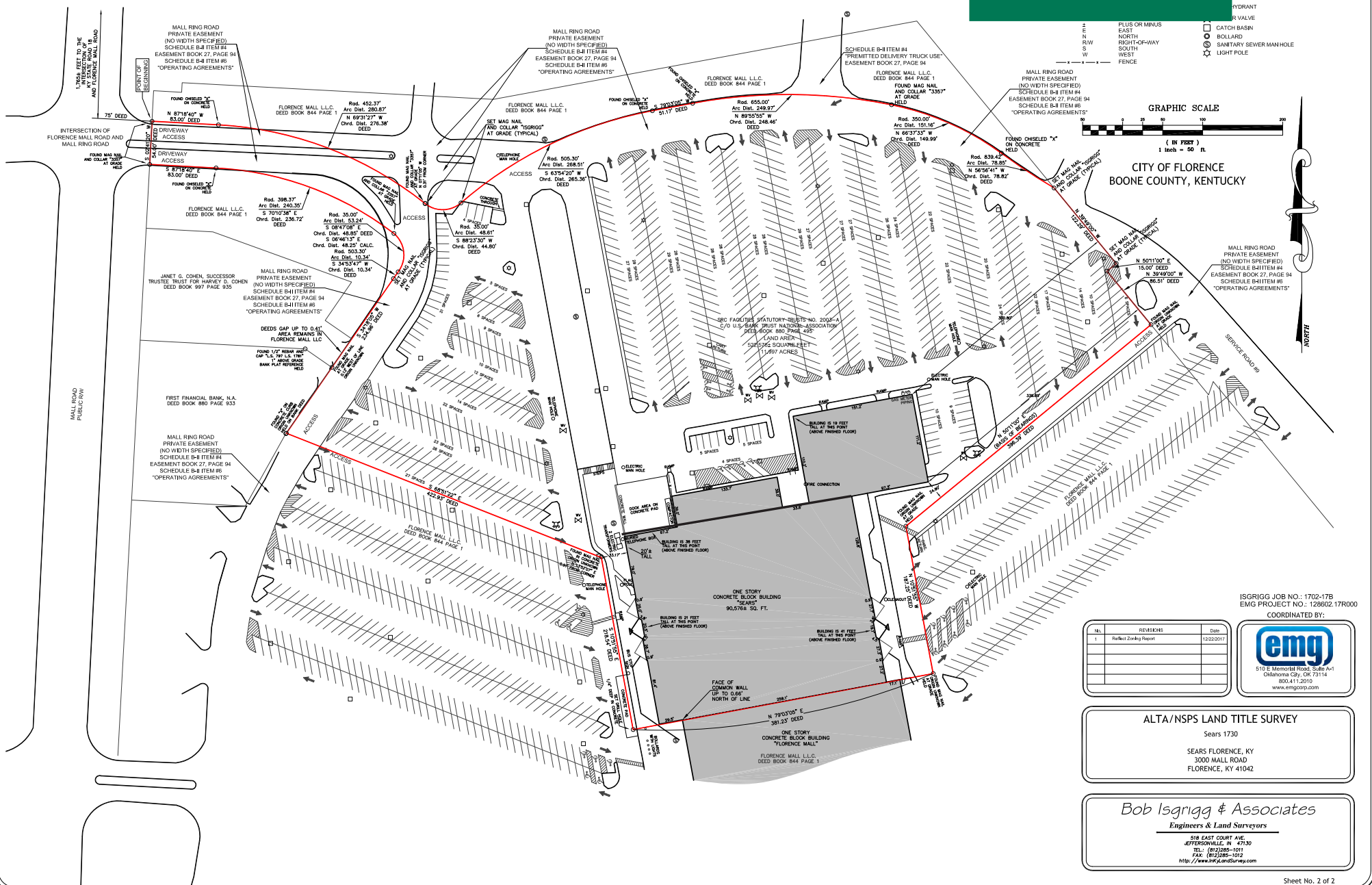
**Anchor**  
ASSOCIATES



The information herein is not guaranteed. Although obtained from reliable sources, it is subject to errors, omissions and withdrawal from the market without notice.

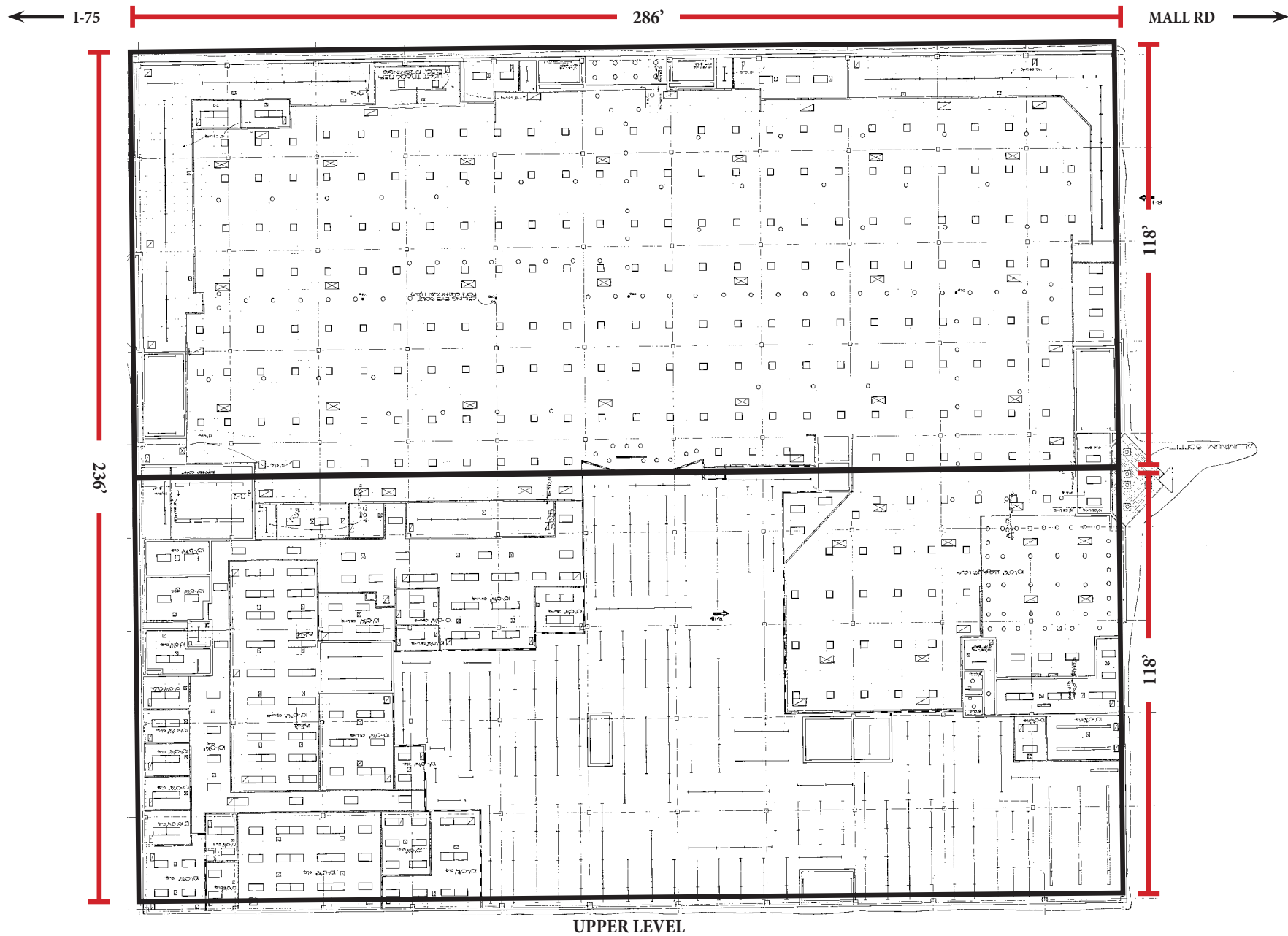
**FORMER SEARS**  
3000 Mall Road  
Florence, KY 41042

**Anchor**  
ASSOCIATES



FORMER SEARS  
3000 Mall Road  
Florence, KY 41042

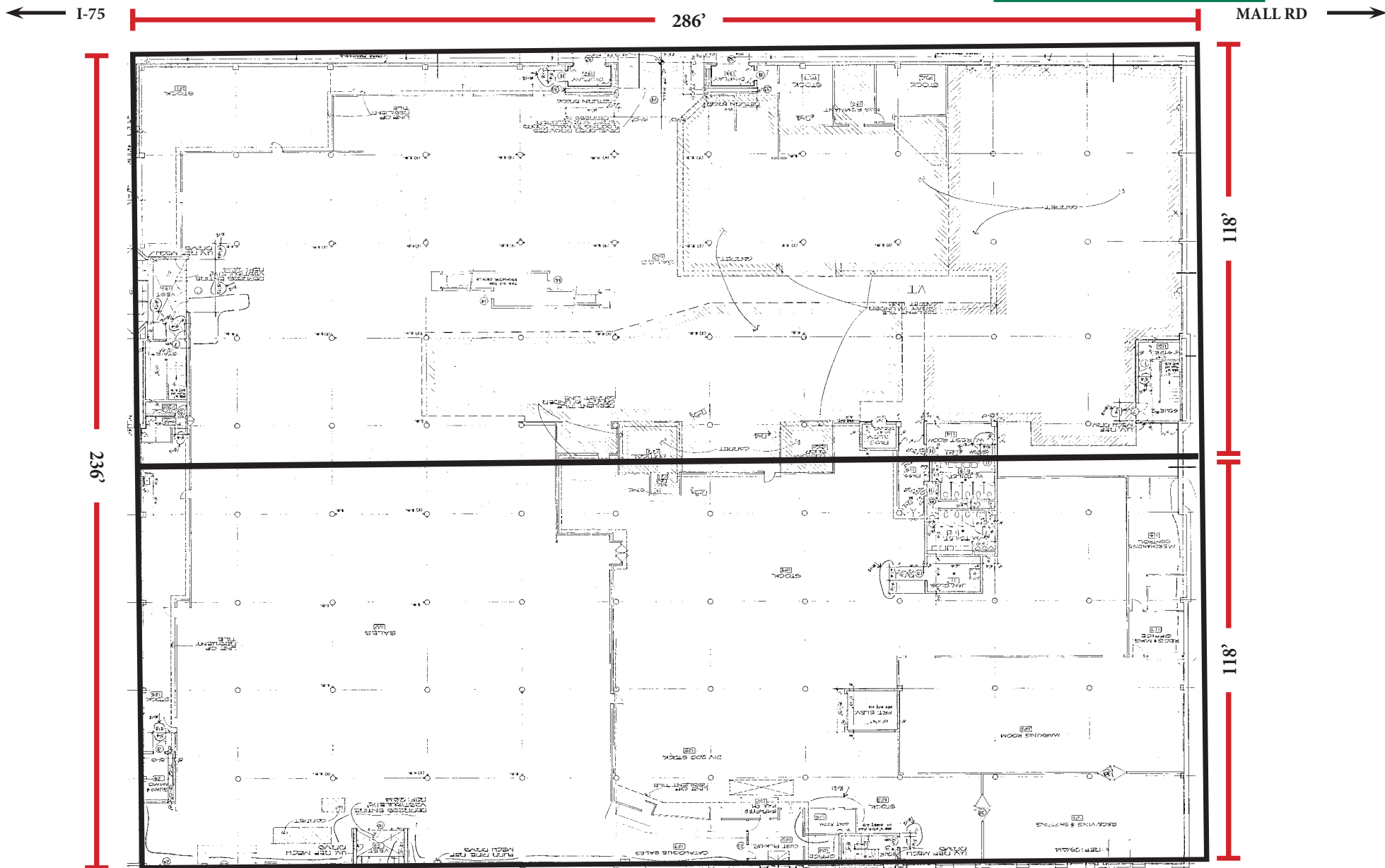
Anchor  
ASSOCIATES



The information herein is not guaranteed. Although obtained from reliable sources, it is subject to errors, omissions and withdrawal from the market without notice.

FORMER SEARS  
3000 Mall Road  
Florence, KY 41042

Anchor  
ASSOCIATES



LOWER LEVEL

The information herein is not guaranteed. Although obtained from reliable sources, it is subject to errors, omissions and withdrawal from the market without notice.