

# Bridgehampton Commons

2044 Montauk Highway, Bridgehampton, New York

Operating Kmart Store Sublease



## Property Information

- + **Available for Sublease:** ±12,500 square feet  
(Sublease space to be mutually agreed upon)
- + **Zoning:** SCB
- + **Remaining Term:** Through 1/31/2039
- + **Delivery Condition:** Cold Dark Shell with new Storefront
- + **Possession:** Arranged
- + **Asking Rent:** To be negotiated
- + Sublease through Transformco, represented by CBRE

- Comments:**
- Grocery anchored center located in the heart of the Hamptons
  - Situated on Montauk Highway, the dominant commercial corridor running East/West across the Hamptons
  - Neighboring co-tenants include King Kullen, TJ Maxx, Ulta, Walgreens, Athleta, Barnes & Noble, Kmart, Marshalls, Panera Bread, Petco, Staples, Verizon & Williams Sonoma



# Macro Aerial



## Contact Us

**John Hanlon**  
Senior Vice President  
+1 631 370 6030  
john.hanlon@cbre.com

**Marta Villa**  
Senior Vice President  
+1 973 437 2040  
marta.villa@cbre.com



# Micro Aerial



## Contact Us

**John Hanlon**  
Senior Vice President  
+1 631 370 6030  
john.hanlon@cbre.com

**Marta Villa**  
Senior Vice President  
+1 973 437 2040  
marta.villa@cbre.com



# Site Plan

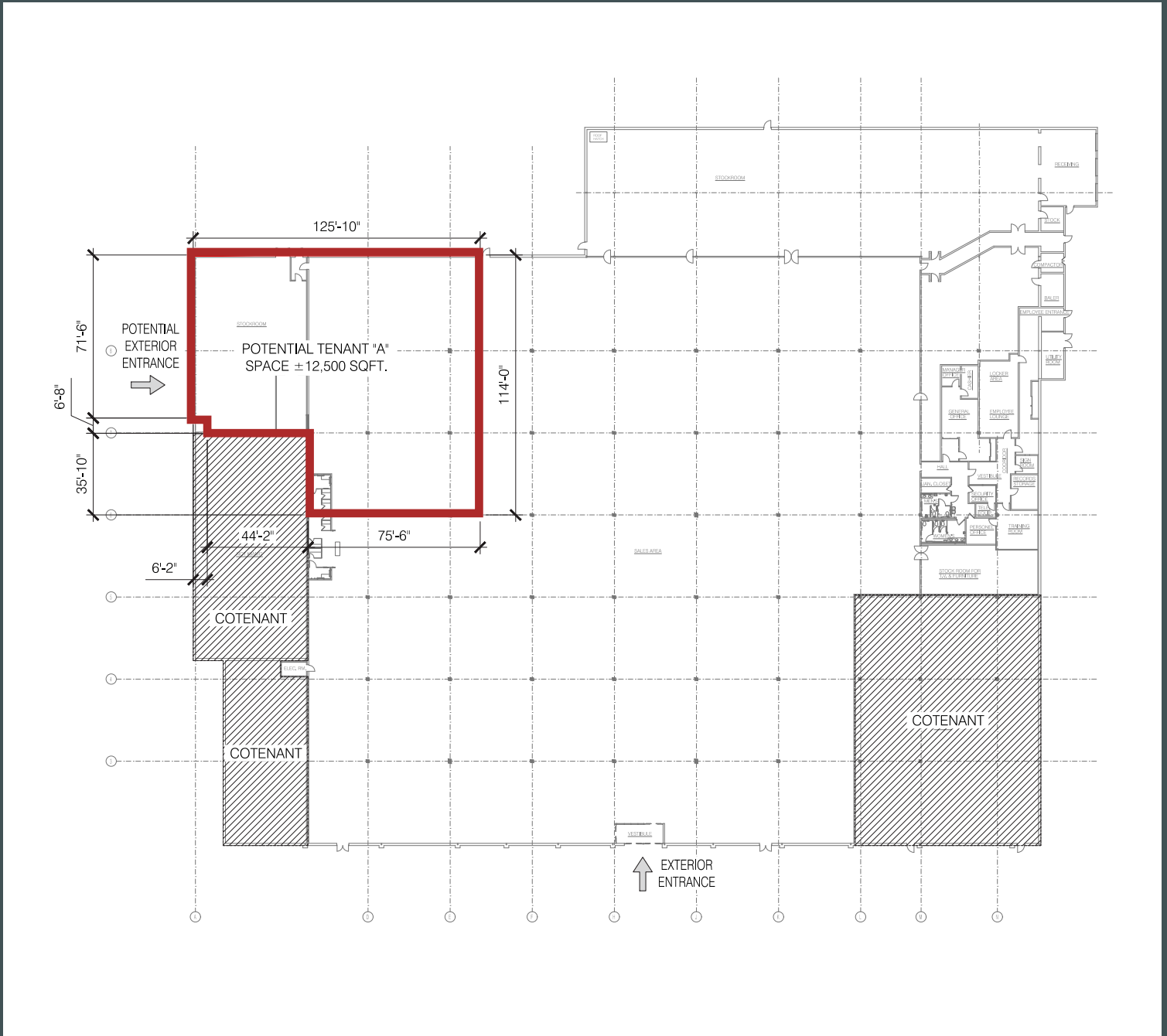


## Contact Us

**John Hanlon**  
Senior Vice President  
+1 631 370 6030  
john.hanlon@cbre.com

**Marta Villa**  
Senior Vice President  
+1 973 437 2040  
marta.villa@cbre.com

# LOD



## Contact Us

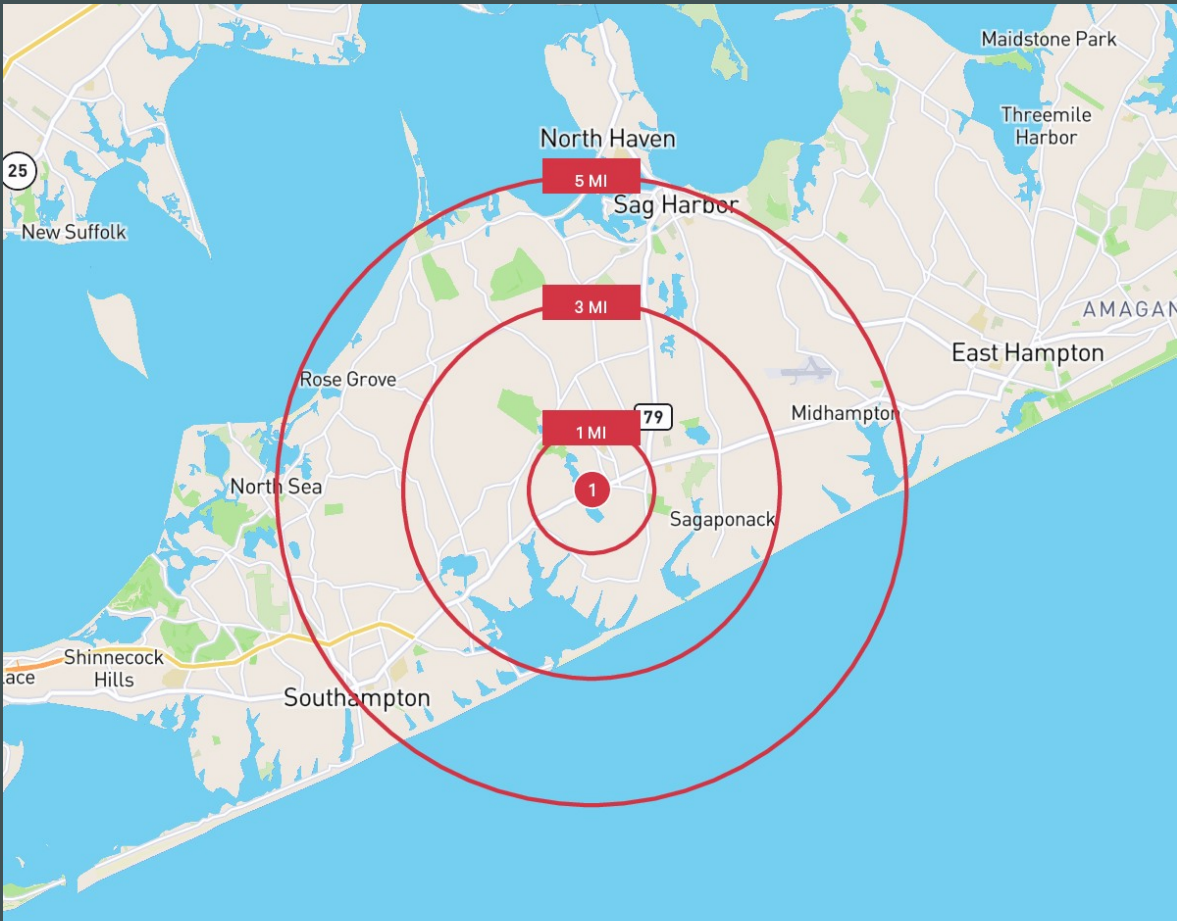
**John Hanlon**  
Senior Vice President  
+1 631 370 6030  
john.hanlon@cbre.com

**Marta Villa**  
Senior Vice President  
+1 973 437 2040  
marta.villa@cbre.com



# Demographics

Demographics	1 Mile	3 Miles	5 Miles
Population	723	5,205	20,639
Med. HH Income	\$130,152	\$128,086	\$117,268
Daytime Pop.	1,959	6,319	25,425



## Contact Us

**John Hanlon**

Senior Vice President  
+1 631 370 6030  
john.hanlon@cbre.com

**Marta Villa**

Senior Vice President  
+1 973 437 2040  
marta.villa@cbre.com

© 2023 CBRE, Inc. All rights reserved. This information has been obtained from sources believed reliable, but has not been verified for accuracy or completeness. You should conduct a careful, independent investigation of the property and verify all information. Any reliance on this information is solely at your own risk. CBRE and the CBRE logo are service marks of CBRE, Inc. All other marks displayed on this document are the property of their respective owners, and the use of such logos does not imply any affiliation with or endorsement of CBRE. Photos herein are the property of their respective owners. Use of these images without the express written consent of the owner is prohibited.

