



Available

Property Highlights

- Property is located in the main retail corridor of Topeka, which is the State Capital
- Third largest enclosed mall in the State of Kansas
- Positioned next to Dillards, which is likely the highest traffic generator at the Mall
- Adjacent SkyZone and Regal Cinemas may provide an opportunity to create an entertainment district

Property Description

125,000 SF former Sears located on a 7.6 acre parcel at West Ridge Mall - the third largest enclosed mall in the state of Kansas. This is a tremendous opportunity to be positioned near Dillards, Menards, Lowe's, Walmart, Sam's Club and Kohl's.

Key Retailers



West Ridge Mall

1781 SW Wanamaker Rd
Topeka, KS 66604

Tom O'Leary

816.268.9101

toleary@lane4group.com

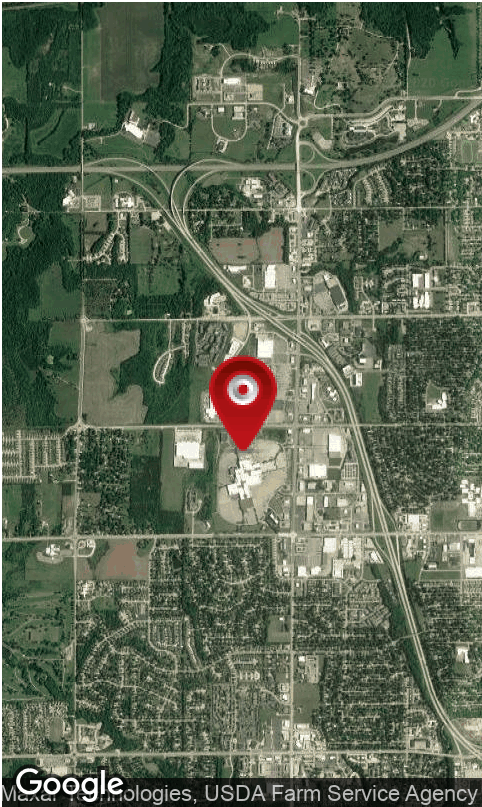
us.jll.com/retail





Property Data

# of Levels	2
Parking	Surface
Zoning	PUD (Planned Unit Development District)





Google

Map data ©2020 Imagery ©2020 , Maxar Technologies, USDA Farm Service Agency

Although information has been obtained from sources deemed reliable, neither Owner nor JLL makes any guarantees, warranties or representations, express or implied, as to the completeness or accuracy as to the information contained herein. Any projections, opinions, assumptions or estimates used are for example only. There may be differences between projected and actual results, and those differences may be material. The property may be withdrawn without notice. Neither Owner nor JLL accepts any liability for any loss or damage suffered by any party resulting from reliance on this information. If the recipient of this information has signed a confidentiality agreement regarding this matter, this information is subject to the terms of that agreement. ©2019 Jones Lang LaSalle IP, Inc. All rights reserved.