



PROPERTY HIGHLIGHTS

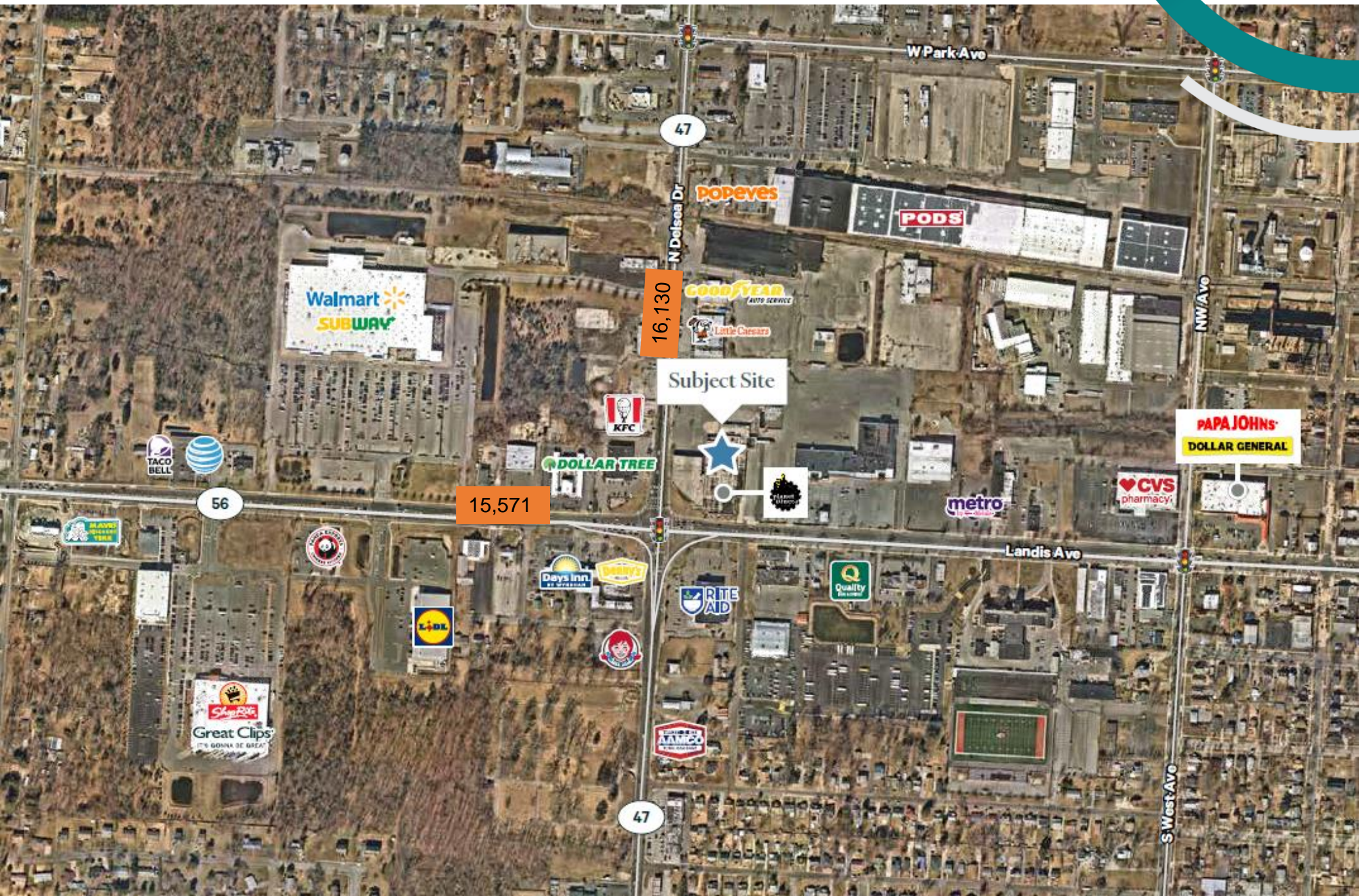
- Sears Department Store: 76,412 SF (divisible)
- Space 1: TBD
- Space 2: TBD
- Sears Auto Center: 14,376 SF
- Approximately 9.5-acre site
- Built in 1966
- Located in the B 3 zone
- Taxes: \$41,325.41
- Freestanding Sears Department Store and Sears Auto locations for lease or sale
- 9.5-acre site at a signalized intersection of W Landis Avenue and Delsea Drive in Vineland's retail trade area
- Near to highway access Route 55 Veterans Memorial Highway the main arterial through Cumberland and Gloucester Counties in Southern NJ
- Significant traffic counts along both roads



SURVEY



MARKET AERIAL





CONTACT US

MARTA VILLA

Senior Vice President

+1 973 715 8385

marta.villa@cbre.com

© 2022 CBRE, Inc. All rights reserved. This information has been obtained from sources believed reliable but has not been verified for accuracy or completeness. You should conduct a careful, independent investigation of the property and verify all information. Any reliance on this information is solely at your own risk.

CBRE